

DOT PEEN GUIDE



.....

SINGLE-PIN PINSTAMP® DOT PEEN MARKERS

MULTI-PIN PINSTAMP® DOT PEEN MARKERS

PORTABLE PINSTAMP® DOT PEEN MARKERS

PINSTAMP® **CONTROLLERS**

BENCHMARK® DOT PEEN MARKERS

TELESCRIBE® MARKING SYSTEMS

VISION TECHNOLOGIES FOR DOT PEEN

TELESIS



Telesis has been the innovator in dot peen marking technology for decades. Everything else is an imitation.

THE WORLD'S **FASTEST** DOT PEEN **MARKER**

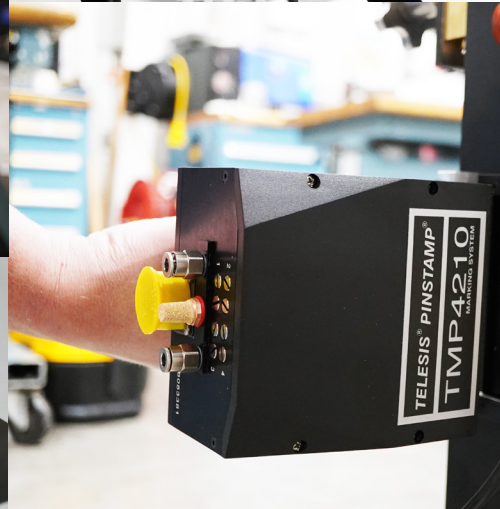
Our PINSTAMP® dot peen markers have multiple pins to complete marks more quickly. From 2 pins to 8 pins, more pins means more speed.

PROPRIETARY **FLOATING** **PIN**

Telesis dot peen markers feature revolutionary technology that accommodates extreme surface irregularities, reduces cost of ownership, and achieves faster speeds.

MULTI- **STRIKE**

The Telesis-exclusive Multi-Strike feature fires the pin multiple times, resulting in a deeper mark.



Content

● **Single-Pin PINSTAMP®** Page 6
Dot Peen Markers

● **Multi-Pin PINSTAMP®** Page 16
● Dot Peen Markers

● **Portable PINSTAMP®** Page 20

○ **Entry-Level BenchMark®** Page 22
Dot Peen Markers

■ **Dot Peen Controllers** Page 24

Dot Peen Accessories Page 26

iZONIT™ Vision for PINSTAMP® Markers Page 27

Dot Peen Details Page 28

Telescribe® Markers Page 32

**SINGLE-PIN
PINSTAMP®**
DOT PEEN
MARKERS

| | TMP1700 | TMP2100 | TMP3200 | TMP4210 | TMP4750 | TMP6100 |
|---------------------------|---|--|---|---|---|---|
| |  |  |  |  |  |  |
| Features | This proven industrial workhorse is an industry staple and continues to impress. | The TMP2100 provides great functionality fit into a smaller footprint. | A generously sized marking window sets this dot peen marker apart from the rest. | The TMP4210 is an incredibly lightweight and compact hand-held marker. | This lightweight hand-held marker delivers remarkable power and depth. | The robotic design delivers precise marks and makes part placement easy. |
| What it's Good For | Field-Proven Design Highly Functional Unparalleled Reliability | Fast Marking Small Characters Compact Envelope | Fast Marking For Constrained Space Robust Construction | For High Production Space Constraints Easy to Use | VIN Marking Extra-Deep Marking Dark Spaces | Large Applications Cylindrical Marking Medical Applications |
| Marking Window (in) | 1.50 in x 2.50 in | 0.79 in x 1.96 in | 4.0 in x 6.0 in | 0.5 in x 2.0 in | 1.57 in x 5.5 in | 6.0 in x 12.0 in |
| Marking Window (mm) | 38 mm x 63 mm | 20 mm x 50 mm | 100 mm x 150 mm | 13 mm x 51 mm | 40 mm x 140 mm | 152 mm x 305 mm |
| Max Marking Speed | 5 characters / second | 4 characters / second | 4 characters / second | 4 characters / second | 4 characters / second | 2 characters / second |
| Marking Depth (in) | 0.001 - 0.013 in | 0.001 - 0.013 in | 0.003 - 0.013 in | 0.001 - 0.013 in | 0.001 - 0.018 in | 0.001 - 0.018 in |
| Marking Depth (mm) | 0.076 - 0.305 mm | 0.03 - 0.33 mm | 0.03 - 0.33 mm | 0.03 - 0.33 mm | 0.03 - 0.45 mm | Varies |
| Max Character Height (in) | 1.5 in | 0.79 in | 4.0 in | 0.5 in | 5.5 in | 6 in |
| Max Character Height (mm) | 38 mm | 20 mm | 101.6 mm | 12.7 mm | 140 mm | 152.4 mm |
| Max Resolution | 200 dpi | 200 dpi | 200 dpi | 200 dpi | 200 dpi | 200 dpi |
| Logo Marking Capable | Yes | Yes | Yes | Yes | Yes | Yes |
| 2D Code Marking Capable | Yes | Yes | Yes | Yes | Yes | Yes |
| Radial Marking Capable | Yes | Yes | Yes | No | No | Yes |
| Programmable Z-Axis | Yes | Yes | Yes | Yes | No | Yes |
| Floating Pin Technology | Yes | Yes | Yes | Yes | Yes | Yes |
| Maximum Number of Pins | 1 | 1 | 1 | 1 | 1 | 1 |
| Mounting | Fixtured Standard Handheld Optional | Fixtured Standard Handheld Optional | Fixtured Standard Handheld Optional | Handheld Standard Fixtured Optional | Handheld Standard Fixtured Optional | Fixtured Standard |
| Available in Electric | Yes | No | Yes | No | No | No |
| Controllers Available | Fixed Button (TMC470) Touch Screen (TMC520) Merlin III w/ PC | Fixed Button (TMC470) Merlin III w/ PC | Fixed Button (TMC470) Merlin III w/ PC | Fixed Button (TMC470) Merlin III w/ PC | Fixed Button (TMC470) Touch Screen (TMC520) Merlin III w/ PC | Fixed Button (TMC470) Merlin III w/ PC |

The Proven Industrial Workhorse



PINSTAMP® TMP1700

Rugged, low-maintenance X/Y platform

Compact, contaminant-resistant head design

Marks a wide range of materials from soft plastics to hardened steel (rc60)

Interchangeable marking pin sizes for depths from 0.001 in - 0.018 in (0.03 mm - 0.45 mm)

Floating pin technology easily **accommodates surface irregularities** up to 0.25 in (6 mm)

Additional Features

TMP1700EAS: Available as electric model

Marking speeds up to five characters per second

Automatically generates serial numbers, time, date, and shift codes

Store hundreds of marking patterns

Easily interfaced to PLCs and host computers

Marking Window



Marking Specifications

| | |
|------------------------------|---------------------|
| Max Character Depth | 0.003 in 0.76 mm |
| Max Character Height | 1.5 in 38.1 mm |
| Characters per Second | 5 |
| Resolution | 200 dpi |

Options and Accessories

Rotary fixtures for marking circumferences of cylindrical parts

Marking head mounting post, including programmable Z-axis

Panel-mount and IP/NEMA rated controllers

Easy and free software upgrades

Controllers

Fixed Button (TMC470)

Touch Screen (TMC520)

PC with Merlin® III

Software

Proprietary **Merlin® III** (optional)



A Large Marking Window



PINSTAMP® TMP3200

Simple yet robust belt-driven dual rail

X/Y platform yields **high-quality characters**

Rugged design means **long-lasting, low-maintenance operation**

Marks a wide range of materials from soft plastics to hardened steel (rc60)

Floating pin technology easily **accommodates surface irregularities** up to 0.25 in (6 mm)

Additional Features

TMP3200EAS: Available as electric model

Dot Density: Up to 200 dots-per-inch (79 dots per centimeter)

Choice of interchangeable marking pins: .001 in - .018 in (0.03 mm - 0.34 mm)

Marking speeds up to four characters per second

Automatically generates serial numbers, time, date, and shift codes

Marking Window



Marking Specifications

| | |
|-----------------------|---------------------|
| Max Character Depth | 0.013 in 0.33 mm |
| Max Character Height | 4.0 in 101.6 mm |
| Characters per Second | 4 |
| Resolution | 200 dpi |

Options and Accessories

Rotary fixtures for marking circumferences of cylindrical parts

Marking head mounting post, including programmable Z-axis

Panel-mount and IP/NEMA-rated controllers

Easy and free software upgrades

Controllers

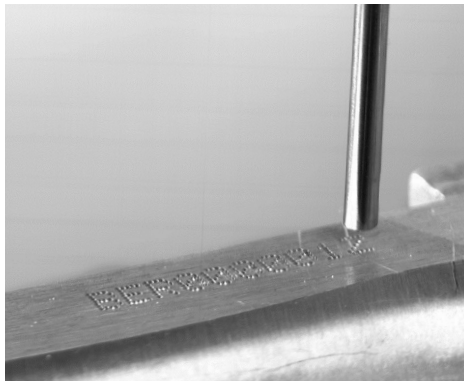
Fixed Button (TMC470)

Touch Screen (TMC520)

PC with Merlin® III

Software

Proprietary Merlin® III (optional)



Lightweight and Compact Handheld



PINSTAMP® TMP4210

Great for smaller environments where movement and space are restricted

Lightweight construction makes the marker **easy to hold** for long periods of time

Durable components **withstand tough manufacturing environments**

Satisfies a wide range of applications **either as a portable handheld marker or integrated**

Additional Features

Dot Density: Up to 200 dots-per-inch (79 dots per centimeter)

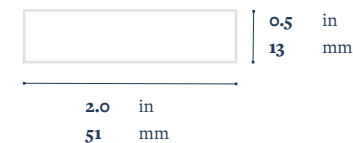
Choice of interchangeable marking pins: .001 in - .018 in (0.03 mm - 0.34 mm)

Marking speeds up to four characters per second

Automatically generates serial numbers, time, date, and shift codes

Easily interfaced to PLCs and host computers

Marking Window



Marking Specifications

| | |
|------------------------------|--------------------|
| Max Character Depth | 0.013 in 0.3 mm |
| Max Character Height | 0.5 in 12.7 mm |
| Characters per Second | 4 |
| Resolution | 200 dpi |

Options and Accessories

Quick-Disconnect tool post

Multi-Strike

Panel-mount and IP/NEMA-rated controllers

Easy and free software upgrades

Controllers

Fixed Button (TMC470)

Touch Screen (TMC520)

PC with Merlin® III

Software

Proprietary **Merlin® III** (optional)



Robotic Design for Precise Marks

"The 6100 is top quality. Our markers run all day long and they are bulletproof."

- Bud Nelson, Acutec Precision



PINSTAMP® TMP6100

Great for cylindrical marking where a rotary device can add efficiency and practicality

Durable components **withstand tough manufacturing environments**

Satisfies a wide range of marking applications while **integrating into factory automation networks**

AutoSense motorized Z-Axis mounting post ensures **consistent pin stroke and critical standoff distance is consistently repeated**

Additional Features

TMP6100EAS: Available as electric model

Choice of interchangeable marking pins: .001 in - .018 in (0.03 mm - 0.34 mm)

Marking speeds up to two characters per second

Automatically generates serial numbers, time, date, and shift codes

Easily interfaced to PLCs and host computers

Marking Window



Marking Specifications

| | |
|-----------------------|------------------|
| Max Character Depth | Varies |
| Max Character Height | 6 in 152.4 mm |
| Characters per Second | 2 |
| Resolution | 200 dpi |

Options and Accessories

Rotary fixtures for marking cylindrical parts

Marking head mounting post, including programmable Z-axis

Panel-mount and IP/NEMA-rated controllers

Easy and free software upgrades

Controllers

Fixed Button (TMC470)

Touch Screen (TMC520)

PC with Merlin® III

Software

Proprietary Merlin® III (optional)



●●●
**MULTI-PIN
 PINSTAMP®**
 DOT PEEN
 MARKERS

TMM4200



TMM4215



TMM4250



TMM5100

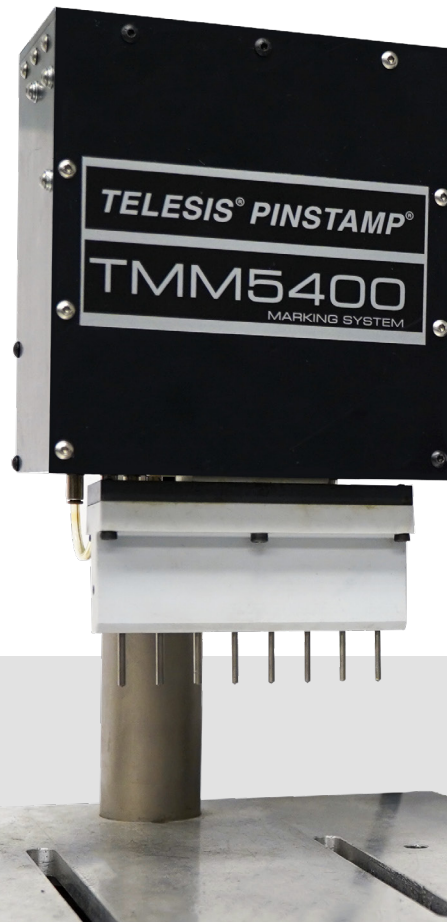


TMM5400



| Features | A unique, compact ergonomic multi-pin marker is incredibly fast. | A unique, compact ergonomic multi-pin marker is incredibly fast. | Ideal for online applications in wet, dirty manufacturing environments. | Equipped with six marking pins, the TMM5100 is a lightweight and compact dot peen marker. | Equipped with eight marking pins, the TMM5400 is the fastest dot peen marker available. |
|---------------------------|--|--|---|---|---|
| What it's Good For | Constrained Space Comfortable Grip Makes Quick Marks | Constrained Space Comfortable Grip Makes Quick Marks | Wet Environments Fixtured Applications For Constrained Space | Fast Marking Compact Envelope Great for VIN marking | Super Fast Marking Compact Envelope Optimizes Cycle Time |
| Marking Window (in) | 0.5 in x 2.0 in | 0.5 in x 4.0 in | 0.5 in x 2.0 in | 0.625 in x 4.5 in | 0.5 in x 3.78 in |
| Marking Window (mm) | 12.7 mm x 50.8 mm | 12.7 mm x 100 mm | 12.5 mm x 60.8 mm | 16 mm x 114 mm | 13 mm x 96 mm |
| Max Marking Speed | 8 Characters / second | 4 Characters / second | 8 Characters / second | 6 characters / second | 16 characters / second |
| Marking Depth (in) | 0.001 - 0.013 in | 0.001 - 0.013 in | 0.001 - 0.013 in | 0.003 - 0.013 in | 0.003 - 0.013 in |
| Marking Depth (mm) | 0.03 - 0.33 mm | 0.03 - 0.33 mm | 0.03 - 0.33 mm | 0.03 - 0.33 mm | 0.03 - 0.33 mm |
| Max Character Height (in) | 0.5 in | 0.5 in | 0.5 in | 0.625 in | 0.5 in |
| Max Character Height (mm) | 12.7 mm | 12.7 mm | 12.7 mm | 16 mm | 13 mm |
| Max Resolution | 200 dpi | 200 dpi | 200 dpi | 200 dpi | 200 dpi |
| Logo Marking Capable | Yes | Yes | Yes | No | No |
| 2D Code Marking Capable | Yes | Yes | Yes | No | No |
| Radial Marking Capable | No | No | Yes | Yes | Yes |
| Programmable Z-Axis | No | No | No | Yes | Yes |
| Floating Pin Technology | Yes | Yes | Yes | Yes | Yes |
| Maximum Number of Pins | 4 | 2 | 4 | 6 | 8 |
| Mounting | Handheld Standard Fixtured Optional | Handheld Standard Fixtured Optional | Handheld Standard Fixtured Optional | Fixtured Standard Handheld Optional | Fixtured Standard Handheld Optional |
| Available in Electric | No | No | No | No | No |
| Controllers Available | Fixed Button (TMC470) Merlin III w/ PC | Fixed Button (TMC470) Merlin III w/ PC | Fixed Button (TMC470) Merlin III w/ PC | Fixed Button (TMC470) Merlin III w/ PC | Fixed Button (TMC470) Merlin III w/ PC |

World's Fastest Dot Peen Marker



PINSTAMP® TMM5400

Super fast dot peen marker uses an 8-pin design to mark 16 characters per second

Extremely **compact marking head for easy integration** into factory-automated applications

Multiple marking pin cartridge configurations available to optimize marking window size/cycle time combinations

Additional Features

Choice of interchangeable marking pins: .001 in - .018 in (0.03 mm - 0.34 mm)

Marking speeds up to sixteen characters per second

Automatically generates serial numbers, time, date, and shift codes

Easily interfaced to PLCs and host computers

Marking Window



Marking Specifications

| | |
|-----------------------|-----------------|
| Max Character Depth | Varies |
| Max Character Height | 0.5 in 13 mm |
| Characters per Second | 16 |
| Resolution | 200 dpi |

Options and Accessories

Rotary fixtures for marking cylindrical parts

Marking head mounting post, including programmable Z-axis

Panel-mount and IP/NEMA-rated controllers

Easy and free software upgrades

Controllers

Fixed Button (TMC470)

Touch Screen (TMC520)

PC with Merlin® III

Software

Proprietary Merlin® III (optional)

PORTABLE DOT PEEN MARKERS



TMP4500E



Nomad 2000



Nomad 4000



| | | | |
|---------------------------|---|---|--|
| Features | A powerful piece of hand-held equipment, this marker eliminates the need for air. | The Nomad 2000 is a fully portable, rechargeable, battery-powered system. | The Nomad 4000 is a fully portable, rechargeable, with more power than the 2000. |
| What it's Good For | Does Not Require Air Makes Deep Marks Easy to Hold | Rechargeable Battery Can Go Anywhere Does Not Require Air | Makes Deep Marks Can Go Anywhere Does Not Require Air |
| Marking Window (in) | 1.0 in x 4.0 in | 1.0 in x 4.0 in | 1.0 in x 4.0 in |
| Marking Window (mm) | 25.4 mm x 101.6 mm | 25.4 mm x 101.6 mm | 25.4 mm x 101.6 mm |
| Max Marking Speed | 4 characters / second | 2 characters / second | 2 characters / second |
| Marking Depth (in) | 0.001 - 0.018 in | 0.001 - 0.010 in | 0.001 - 0.018 in |
| Marking Depth (mm) | 0.03 - 0.46 mm | 0.03 - 0.25 mm | 0.03 - 0.46 mm |
| Max Character Height (in) | 1.0 in | 1.0 in | 1.0 in |
| Max Character Height (mm) | 25.4 mm | 25.4 mm | 25.4 mm |
| Max Resolution | 80 dpi | 80 dpi | 80 dpi |
| Logo Marking Capable | Yes | Yes | Yes |
| 2D Code Marking Capable | Yes | Yes | Yes |
| Radial Marking Capable | No | No | No |
| Programmable Z-Axis | No | No | No |
| Floating Pin Technology | No | No | No |
| Maximum Number of Pins | 1 | 1 | 1 |
| Mounting | Handheld Standard | Handheld Standard | Handheld Standard |
| Available in Electric | Electric Only | Electric Only | Electric Only |
| Controllers Available | Fixed Button (TMC470) Merlin III w/ PC | Nomad Controller | Nomad Controller |

○
ENTRY-LEVEL
BENCHMARK®
DOT PEEN
MARKERS



BenchMark® 200



BenchMark® 320



BenchMark® 460



Features

An entry-level system with extruded aluminum marking head mounting post and base

An entry-level machine good for bench-top applications and stand-alone marking.

An entry-level fully programmable machine great for portable marking.

What it's Good For

Data Plate Marking
Workshop Application
Small Volume Operations

Data Plate Marking
Large Parts
Complex Geometry

Property Marking
VIN Marking
Remote Operations

Marking Window (in)

4.0 in x 4.0 in

4.0 in x 6.0 in

1.0 in x 4.0 in

Marking Window (mm)

101 mm x 101 mm

101 mm x 152.4 mm

25 mm x 101 mm

Max Marking Speed

3 characters / second

3 characters / second

3 characters / second

Marking Depth (in)

0.001 - 0.010 in

0.001 - 0.018 in

0.001 - 0.010 in

Marking Depth (mm)

0.03 - 0.25 mm

0.03 - 0.46 mm

0.03 - 0.25 mm

Max Character Height (in)

4.0 in

4.0 in

1.0 in

Max Character Height (mm)

101.6 mm

101.6 mm

25.4 mm

Max Resolution

80 dpi

75 dpi

80 dpi

Logo Marking Capable

Yes

Yes

Yes

2D Code Marking Capable

Yes

Yes

Yes

Radial Marking Capable

No

Yes

No

Programmable Z-Axis

No

No

No

Floating Pin Technology

No

No

No

Maximum Number of Pins

1

1

1

Mounting

Fixtured Standard

Fixtured Standard

Handheld Standard

Available in Electric

Electric Only

Electric Only

Electric Only

Controllers Available

Fixed Button (BM470)
Touch Screen (TMC520)

Fixed Button (BM470)
Touch Screen (TMC520)
Merlin III w/ PC

Fixed Button (BM470)
Touch Screen (TMC520)



TMC470 Fixed Button Controller

- Fully contained controller—**no PC required**
- Easy-to-use menu** design for pattern design
- Ethernet port for **TCP/IP communications**
- EthernetIP** and **PROFINET** capable
- Durable** membrane keyboard
- Store up to **400 marking patterns** locally
- Panel-mount** kits available
- Software **can be customized** for unique applications



TMC520 Touch Screen Controller

- Create a design** and produce a mark **in under a minute**
- See the design exactly** how it will look before printing
- Easy-to-use tools** for arc text, graphics, and data matrix
- Contaminant-resistant design** and flexible installation
- Software **can be customized** for unique applications
- Impact-resistant** touch screen interface
- Panel-mount and stand **kits available**
- Simple menu design** for pattern creation
- Ethernet IP and Profinet capable**

TMC520 FEATURES



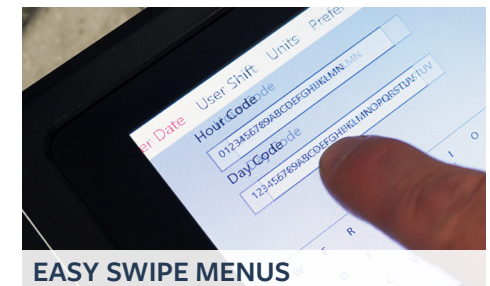
PINCH ZOOM



PARSE FLAGS



ARC TEXT



EASY SWIPE MENUS

Dot Peen Accessories

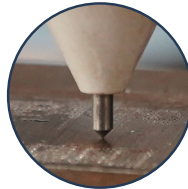
Barcode Scanner

Adding a barcode scanner to your system allows **quick code-based upload and change of pattern** designs. Additionally, it can test and verify completed marks.



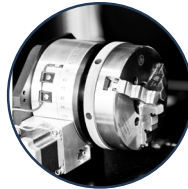
AutoSense

AutoSense **automatically calibrates and sets the pin distance**, eliminating need for guess work and allowing quick setup of the machine. Available on select models.



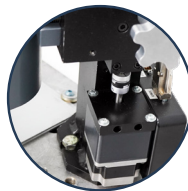
Rotary Chuck

Rotary chucks are made for **programmable marking around the circumference or along the axis of round parts** by rotating the part in sync with the marking pin.



Programmable Z-Axis

Programmable marking system **can mark parts in multiple locations on the Z axis, including in recessed areas**. Ideal for use in factory automation settings.

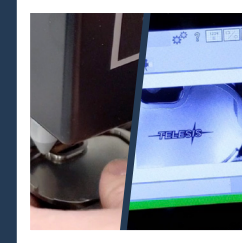


Fixtures

Item-holding fixtures can be designed to **adjust, accommodate, and hold different size items**, tags, and nameplates while the engraving is executed.



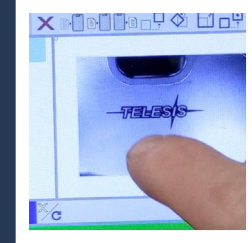
VISION FOR PINSTAMP[®] MARKERS



View the object to be marked and **precisely fix mark position with on-screen controls**.



Higher degree of mark positioning precision—especially when marking smaller parts having diameters of less than a quarter of an inch.



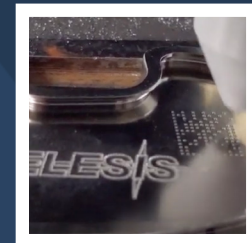
Eliminate trial-and-error / jog-and-view positioning processes by putting “eyes on it”



Save time and increase productivity during pattern design with camera-assisted mark positioning system



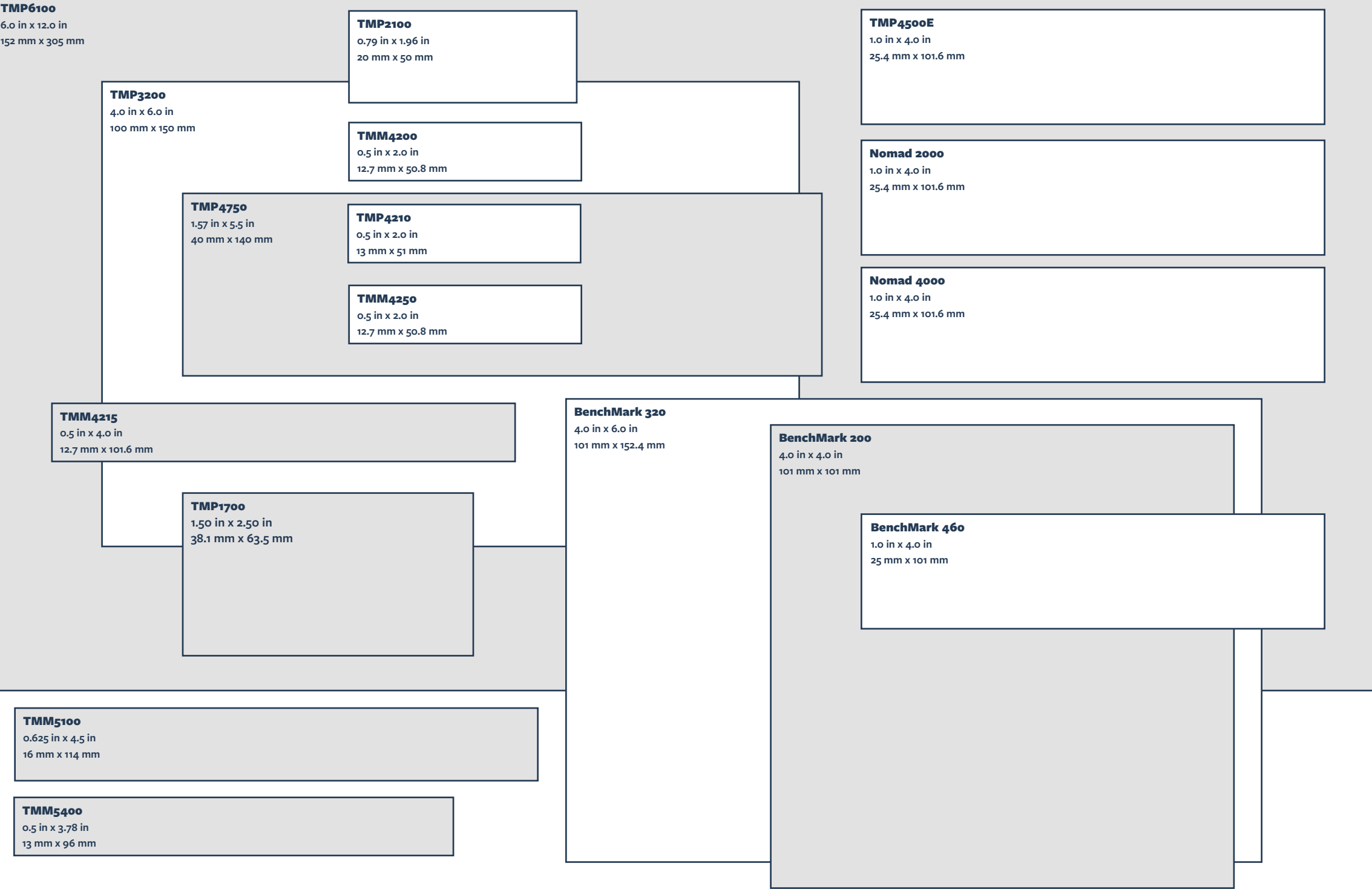
Increase throughput—especially with marking applications that involve multiple parts or a variety of parts immediately verify and validate data matrix 2D codes



Provides greater consistency in meeting the quality requirements of rigorously demanding clients by eliminating operator-dependent variabilities

Marking Windows*

*Actual Size



Deep Marking

PINSTAMP® TMP7000 and PINSTAMP® TMM7200

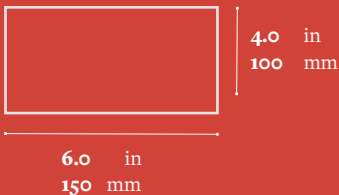
Robust markers like the TMP7000 and TMM7200 **create extra deep marks up to .22 in (.5588 mm).**

The markers are **well suited for truck frame VIN marking and 2D matrix code** for traceability.

Good for heavy duty manufacturing industries requiring **deep marking on pipes, molds, and steel castings.**



TMP7000 Marking Window



Controllers

Fixed Button (TMC470)
PC with Merlin® III

Marking Specifications

| | |
|-----------------------|--------------------|
| Max Character Depth | .22 in .5588 mm |
| Max Character Height | varies |
| Characters per Second | varies |
| Resolution | 200 dpi |

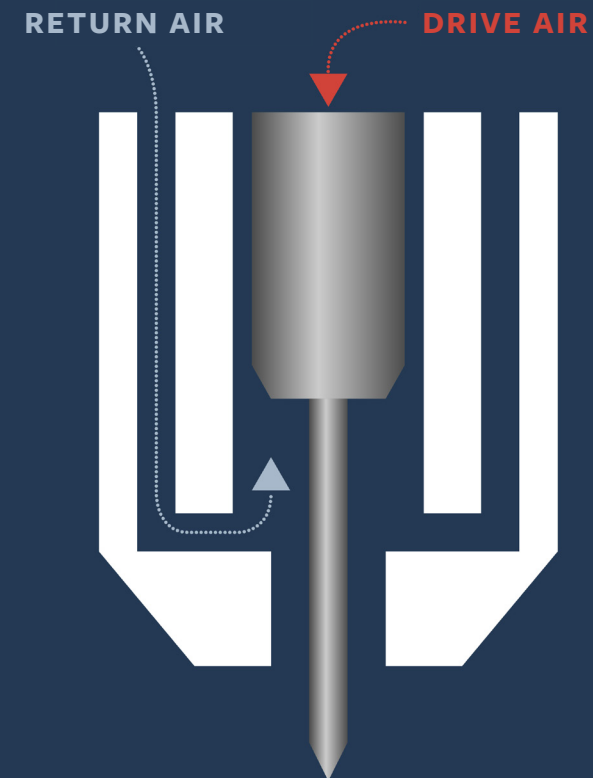
Software

Proprietary Merlin® III (optional)

Floating Pin

PINSTAMP® pneumatic dot peen markers contain our **revolutionary floating pin technology, developed and patented by Telesis.** This technology enables PINSTAMP® marking systems to accommodate surface irregularities up to .25 in (6 mm) and mark clearly and reliably on many types of materials.

- // Give the user the ability to make adjustments to marks
- // No springs to replace
- // Constant positive air flow keeps in chamber clean
- // Achieves higher speeds



A **wide variety** of marking pins are available

Easily integrates into a wide range of automated online and manual applications

Virtually silent marking

Pin **penetrates without puncture**

Produces **crisp** logos in addition to text



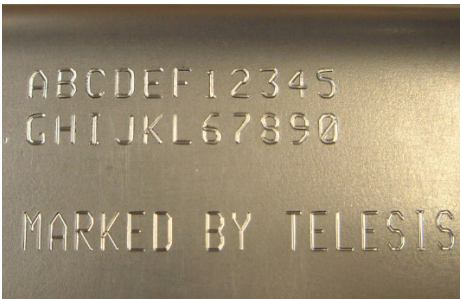
SC2000



The SC2000 is a great low-noise compact marker for continuous marking of human-readable characters and symbols

Marking Window
2.95 in x 1.57 in
(75 mm x 40 mm)

Marking Speed
.125 in (3 mm) character
up to 2 characters/second



SS3700

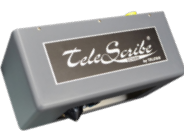


The SS3700 is expertly designed with a large marking window and creates deep, quick marks with a servo-driven motor

Marking Window
2 in x 6 in
(50.8 mm x 152.4 mm)

Marking Speed
.276 in (7 mm) character
up to 4 characters/second

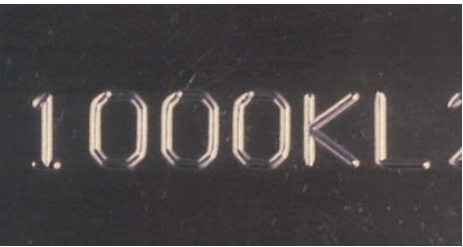
SC5000



A powerful scribe marker, the heavy duty SC5000 has a large marking window and can create extra deep and wide marks

Marking Window
2.5 in x 7.5 in
(63 mm x 190 mm)

Marking Speed
.125 in (3 mm) character
up to 2 characters/second



SC6000VIN



A scribe marker specifically designed to mark VINs, the heavy duty SC6000VIN exceeds deep marking regulations and requirements

Marking Window
1.18 in x 6.5 in
(30 mm x 165.1 mm)

Marking Speed
.18 in (4.5 mm) character
up to 2.0 characters/second

UNEQUALED
CUSTOM
ENGINEERED
SOLUTIONS



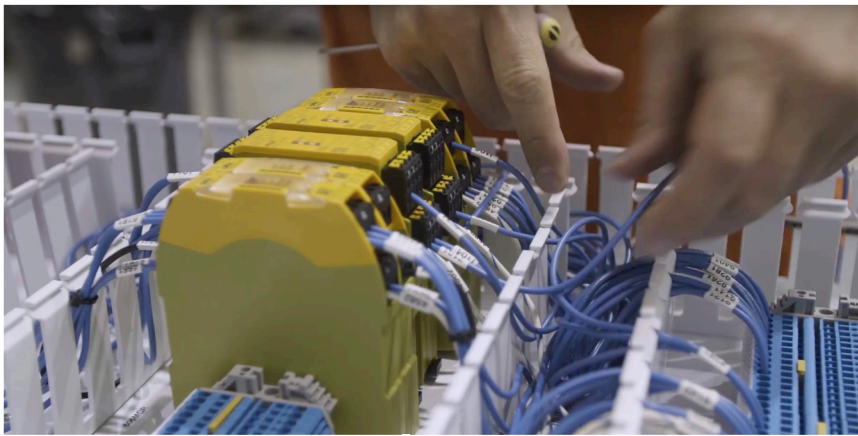
All of our systems—
hardware and software—
are designed and
built in-house at our
state-of-the-art R&D and
manufacturing facilities in
California and Ohio, USA.



LEGENDARY
SERVICE
AND SUPPORT



TOTALLY
TURN KEY



If our standard equipment
doesn't suit your needs,
we will **customize laser
and dot peen systems**
to meet the most
challenging production
requirements.



REPAIR



Careful attention
to quality **ensures**
reliability through
the life of your
marking system.

*"The service department has been all
we could ask for from a technical and
assistance standpoint—a pleasure
to deal with which is always an
appreciated benefit."*

- Chris Shetler, PixlMediaServices, Inc.

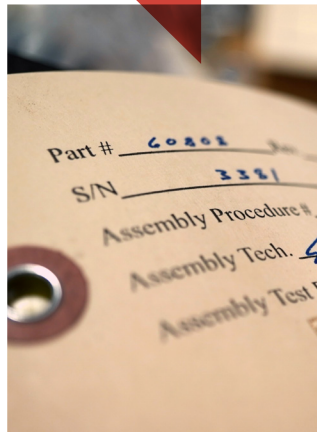


CUSTOM
SOLUTIONS FOR

- ✓ Demanding Cycle Time
- ✓ Difficult Locations
- ✓ Automated Processes
- ✓ Mark-on-the-Fly



ON-SITE
INSTALLATION
& STARTUP



**FREE SAMPLE MARKS
AVAILABLE FROM THE
TELESIS APPLICATION LAB**



TELESIS

WORLDWIDE SALES & SERVICE

telesis.com

sales@telesistech.com

800-654-5696

CIRCLEVILLE

28181 River Drive
Circleville, Ohio 43113
+1 740 477 5000
sales@telesistech.com

FREMONT

48377 Fremont Blvd #115
Fremont, CA 94538

NETHERLANDS

Leeuwenhoekstraat 80
2652 XL Berkel en Rodenrijs
+31 (0)88 505 1800
sales-europe@telesistech.com

LOS ANGELES

2512 Artesia Blvd, Unit 260C
Redondo Beach, CA 92078

NASHVILLE

2070 Lebanon Road
Lebanon, TN 37087

RUSSIA

+7 (343) 287-46-27
sales-sng@Telesis.ru

GERMANY

Wulfingstrasse 6
D-42477 Radevormwald
+49 (0)2191/609080
info@telesis-gmbh.de

CHINA

3000 Long Dong Ave
Bldg 1-402 Pudong New Area
Shanghai, 201203
+86-21-3390-1806
sales@telesischina.com

UNITED KINGDOM

+44 (0)1404 549139
uksales@telesistech.com
Unit 2 Diamond House,
Reme Drive,
Heathpark Industrial Estate,
Honiton, Devon EX14 1SE