



IdentiPlate[®] DPP2000 DATA PLATE PRINTER

The fast, flexible DPP2000 automatically feeds and prints metal data plates in a wide range of sizes and thicknesses. This fully programmable, table-top unit prints multiple character sizes from .03" to 4.00" (.76 to 101.6mm) on a single plate using Telesis' patented, low maintenance floating pin technology. Marking pattern design is quick and easy with DPP2000 user-friendly software.

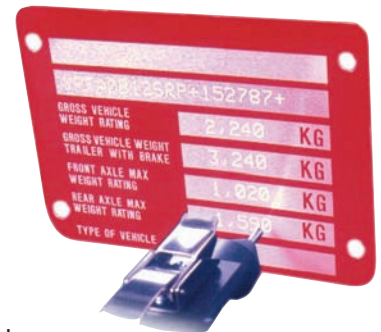
FEATURES

- Character height programmable from .03" to 4.00" (.76 to 101.6mm)
- Dot matrix or continuous line characters
- Compact, table-top design
- Easily adjustable plate feed magazine accommodates plate sizes from 3/4" x 1-1/4" (19 x 31mm) to 4" x 5" (101 x 127mm) and thicknesses from 0.02" to 0.07" (.05 to 1.7mm)
- Automatically feed up to 250 data plates per batch (varies with plate thickness)
- No expensive tooling to wear out
- Long lasting, inexpensive, pneumatically driven marking pin is easy to replace
- Stores up to 75 patterns for instant access. No need to repeat pattern setups
- RS232/485 serial port for data entry via optional Bar Code Scanner or Host Computer
- Rugged data entry terminal with four-line LCD display
- Automatic serialization, date and shift coding, including user defined codes
- Discrete I/O for START PRINT, ABORT, PRINTING, and DONE signals



OPTIONAL ACCESSORIES

- Choose VS2000 software to backup, design and edit patterns on a personal computer
- Bar code scanner for data entry
- Restacker neatly and automatically stacks data plates after marking
- Pre-load additional plate feed magazines for nearly continuous operation



Compact TMC420 Controller features 4-line LCD Display — no PC required.



Features DATA MATRIX™ 2-D Code Marking Capability — Meets all Department of Defense UID Requirements

28181 River Drive • Circleville, Ohio 43113, USA
Tel.: 740-477-5000 • 800-654-5696 • Fax: 740-477-5001

www.telesis.com