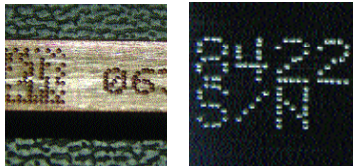


The innovative dual-pin TMM4215 provides a 4" x 0.5" (100 x 13mm) marking window, twice as large as that of the TMM4200. This lightweight, compact marker is available in both fixtured and hand-held configurations.



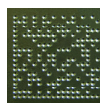
### OPTIONAL ACCESSORIES

- Panel-mount and IP/NEMA rated controllers (see page 25)
- Cable balancer attachment kit
- Marking head standoff V-Block Kit for marking on the circumference of cylindrical parts
- Quick-disconnect tool post
- Bar code scanner for automatic data entry
- Logo-Font Design Software package for design of custom fonts or logos
- PC-based upgrade utility available FREE from [www.telesis.com](http://www.telesis.com) for easy software upgrade
- PC-based Pattern (marking file) Back-up utility available FREE from [www.telesis.com](http://www.telesis.com)

### FEATURES

- Compact, ergonomic design
- Weighs 4.5 pounds (2.0kg)
- Marks up to four .125" (3mm) high characters per second
- Available with the high-speed 25S marking pin or the deep marking 150SA pin
- Marking depths up to 0.013" (.33mm) in Mild Steel
- Rugged Rack and Pinion X/Y Platform for low maintenance operation
- Also available without handle and standoff for fixtured applications
- Detachable Electronics cable for improved serviceability
- Compact, convenient TMC420 controller with rubber keyboard and 4-line LCD display - no PC required (see page 25)
- Automatically generates serial number, time, date and shift codes
- Stores up to 75 marking patterns
- Easily interfaced to PLC's (Programmable Logic Controllers) and host computers

Shown with optional debris shield



The TMM4215/420 contains Data Matrix® 2-D code marking capability, meeting all US Department of Defense UID requirements and other industry standards.