

CO30AP Laser Marking System – General Arrangements

SYSTEM OVERVIEW

The Telesis® CO30AP is a 30-watt, RF-excited, continuous wave, sealed-tube, CO₂ laser marking system that provides a galvo-steered beam designed for marking. The CO30AP laser marking system is excellent for marking substrates like wood, glass, Plexiglas®, quartz, ceramics, fabrics, and other organic materials.

The CO30AP laser offers these advantages:

- Air-cooling – no external water or refrigerant needed
- Compact laser marking head and simple mounting system
- Detachable laser head cable assembly for easy integration
- Visible red aiming diode (optional)
- Standard 115/230VAC operation
- Key switch, Laser Off button, interlocked safety shutter, and emission indicators
- DoD-compliant Unique Identification (UID) marking

SYSTEM CONFIGURATION

The CO30AP is available in several configurations. The marker can be configured at the factory with the galvo head mounted in one of four directions: facing down, up, left, or right.

Additionally, the system may be configured to mark only stationary objects or for marking objects while they are moving (i.e., mark-on-the-fly operation).

The system computer, required for running the Merlin® II LS software, may be an external device connected to the laser controller, or embedded within the laser controller itself.

The modular design allows for major components to be easily replaced and returned to Telesis if required. The basic laser system consists of the following components.

- **Laser Marking Head** – includes the laser tube, optics, shutter assembly, galvanometer assembly, and flat-field lens. A coaxial red aiming diode may be included for pinpoint marking alignment.
- **Laser Controller** – contains circuit boards, electrical components, and the operator console
- **Cable Assemblies** – power, control, and data cables
- **Software** – Merlin II LS Laser Marking Software
- **System Computer** – may be an external device connected to the laser controller or embedded within the laser controller itself. If external, the computer may be supplied by Telesis or by the customer.
- **Monitor, Keyboard, and Mouse** – for systems with external computers, these peripherals may be supplied by Telesis or by the customer; for systems with embedded computers Telesis supplies either a 17" monitor, keyboard and mouse, or a 10" VGA/USB touch screen monitor.

CO30AP Laser Marking System

SYSTEM SPECIFICATIONS

Compliance.....	CDRH
Laser Type.....	RF-excited, continuous wave, sealed-tube, carbon dioxide laser
Wavelength.....	10.6 micrometers (μm)
Long Term Output Power Drift	< $\pm 5\%$
Power Requirements.....	115 VAC, single-phase, 9.0A, 50/60Hz 230 VAC, single-phase, 4.5A, 50/60Hz
System Power (total).....	850 watts (approximate)
Maximum Supply Voltage	264 VAC
Supply Voltage Fluctuation....	< $\pm 10\%$ with clean ground line
Operational Temp	15° to 30°C (59° to 86°F)
Recommended Temp.....	16° to 24°C (61° to 75°F)
Ambient Relative Humidity ...	10% to 90% non-condensing

SYSTEM OPTIONS

- External computer (desktop or notebook with powered cardbus-to-PCI expansion enclosure) to run the Merlin II LS Laser Marking Software
- Embedded computer within laser controller to run Merlin II LS Laser Marking Software with one of the following options:
 - 17" monitor, keyboard, and mouse
 - or
 - 10.1", 1024 x 600, VGA/USB touch screen monitor with on-screen keyboard; includes stylus, 12V DC power adapter, and interface cables
- Laser controller connector/fuse kit
- Remote pushbutton station (start/abort)
- Externally-mounted focus-finder diode
- Mark-on-the-fly kit to interface with customer-supplied encoder for marking objects in motion (linear or circular)
- I/O options (see *Remote Communications* for details):
 - RS-232 connection
 - TCP/IP connection
 - Opto-isolated IO connection
 - Telesis two-axis auxiliary controller
- Manually operated tool post for z-axis adjustment
- Programmable tool post for z-axis adjustment (requires two-axis controller)
- Programmable rotary drive fixture for theta-axis adjustment (requires two-axis controller)
- Workstation / Work Area Enclosure
- Fume Extraction Systems

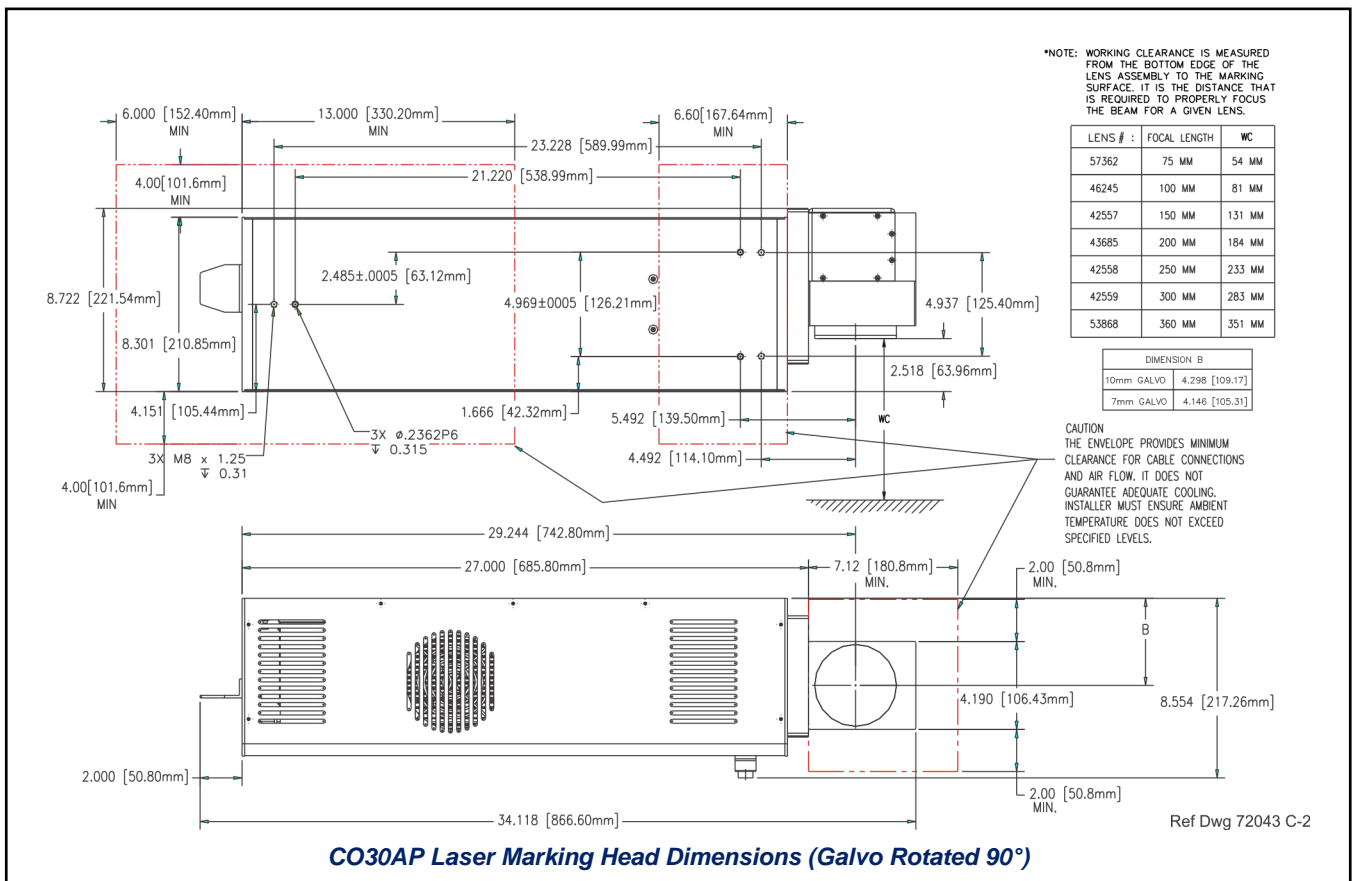
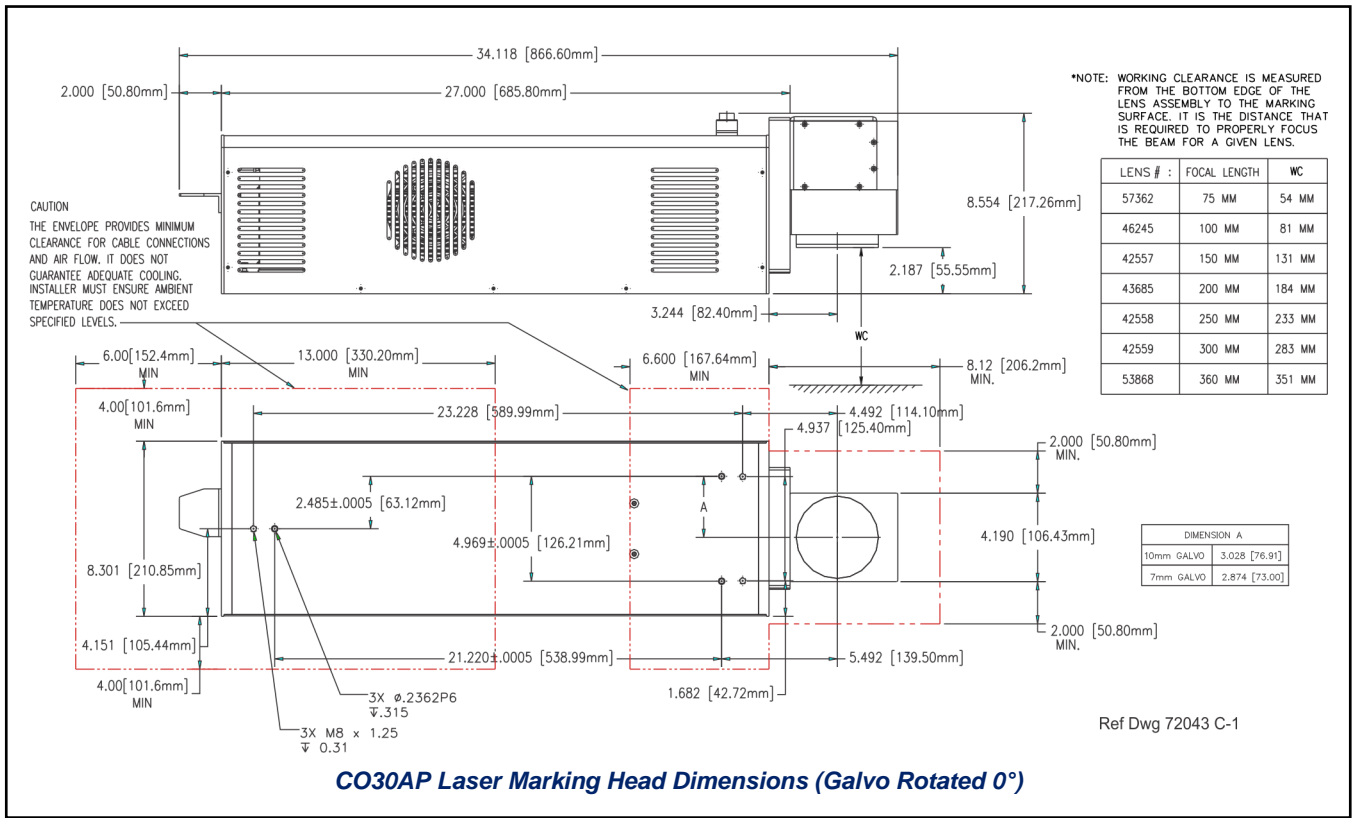
SYSTEM SETUP

The following procedures are listed for reference only to provide a general overview of the installation process. Refer to the *CO30AP Installation & Maintenance Manual* for complete installation details.

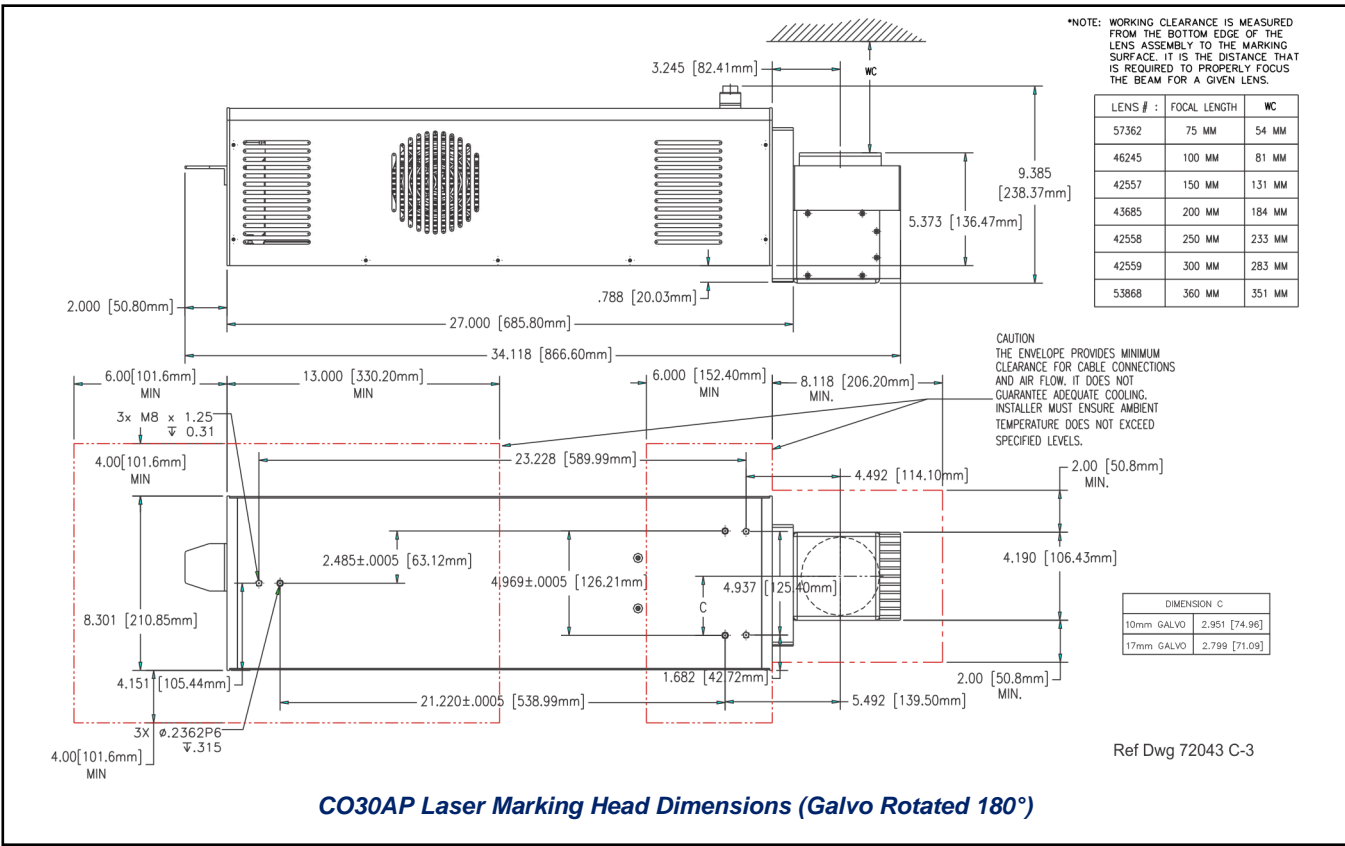
Do not connect any power cable to power source until all system connections are made.

1. All equipment must remain powered down and in the OFF position until mounting and connection are complete.
2. Place the laser controller in the desired location. Locate the laser controller as close as practical to the laser marking head.
3. Ensure sufficient clearance exists on all sides of the laser controller to allow for proper air circulation and to permit proper installation of applicable cables. Refer to the *C1030 Laser Controller Dimensions* drawings for details.
4. Place the laser marking head on a suitable mounting surface.
5. Ensure sufficient clearance exists on all sides of the laser marking head to allow for proper air circulation and to permit proper installation of applicable cables.
6. Mount the laser marking head with three M8-1.25 bolts and lock washers using the factory-tapped mounting holes provided. Refer to the *CO30AP Laser Marking Head Dimensions* drawings for details.
 - Caution:** Maximum mounting bolt penetration into the laser marking head is 7.8 mm (.31 in.).
 - Note:** Optionally, three M6 locating pins may be used at the 0.2362 P6 hole locations for more precise marking head alignment.
7. For systems with external computers, connect the monitor keyboard, and mouse to the system computer. For systems with embedded computers, connect the monitor (and, if applicable, keyboard and mouse) to the laser controller.
8. Connect the laser marking head and all remaining cables to the laser controller.
9. Connect any optional or customer-supplied devices or interface circuits as applicable.
10. Refer to the *CO30AP Operation Supplement* for proper startup procedure. Refer to the *Merlin II LS Operating Instructions* for complete information on using the system software.

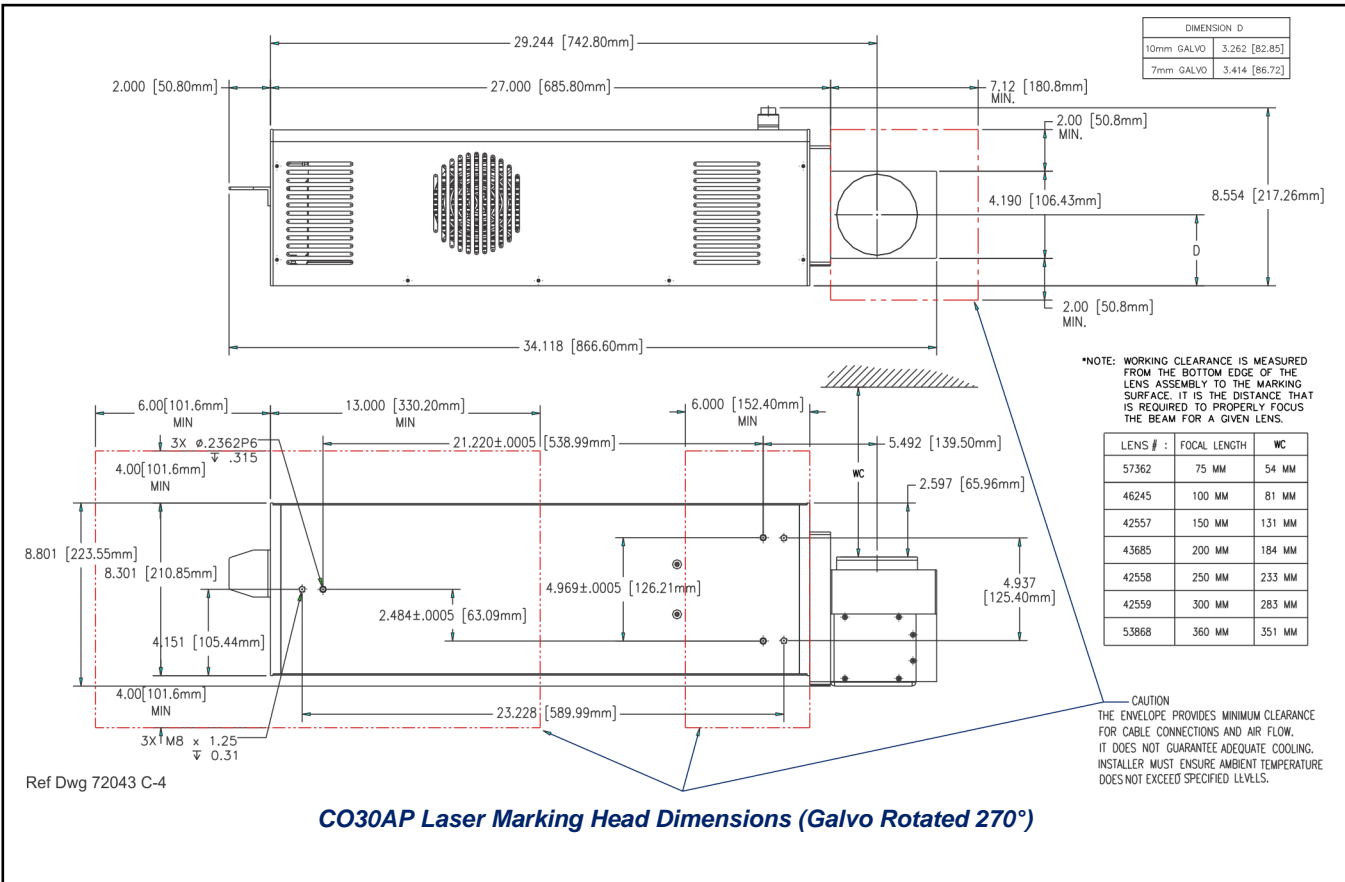
CO30AP Laser Marking System



CO30AP Laser Marking System



CO30AP Laser Marking Head Dimensions (Galvo Rotated 180°)

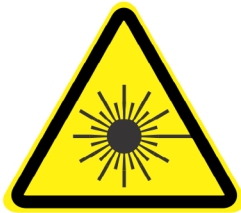
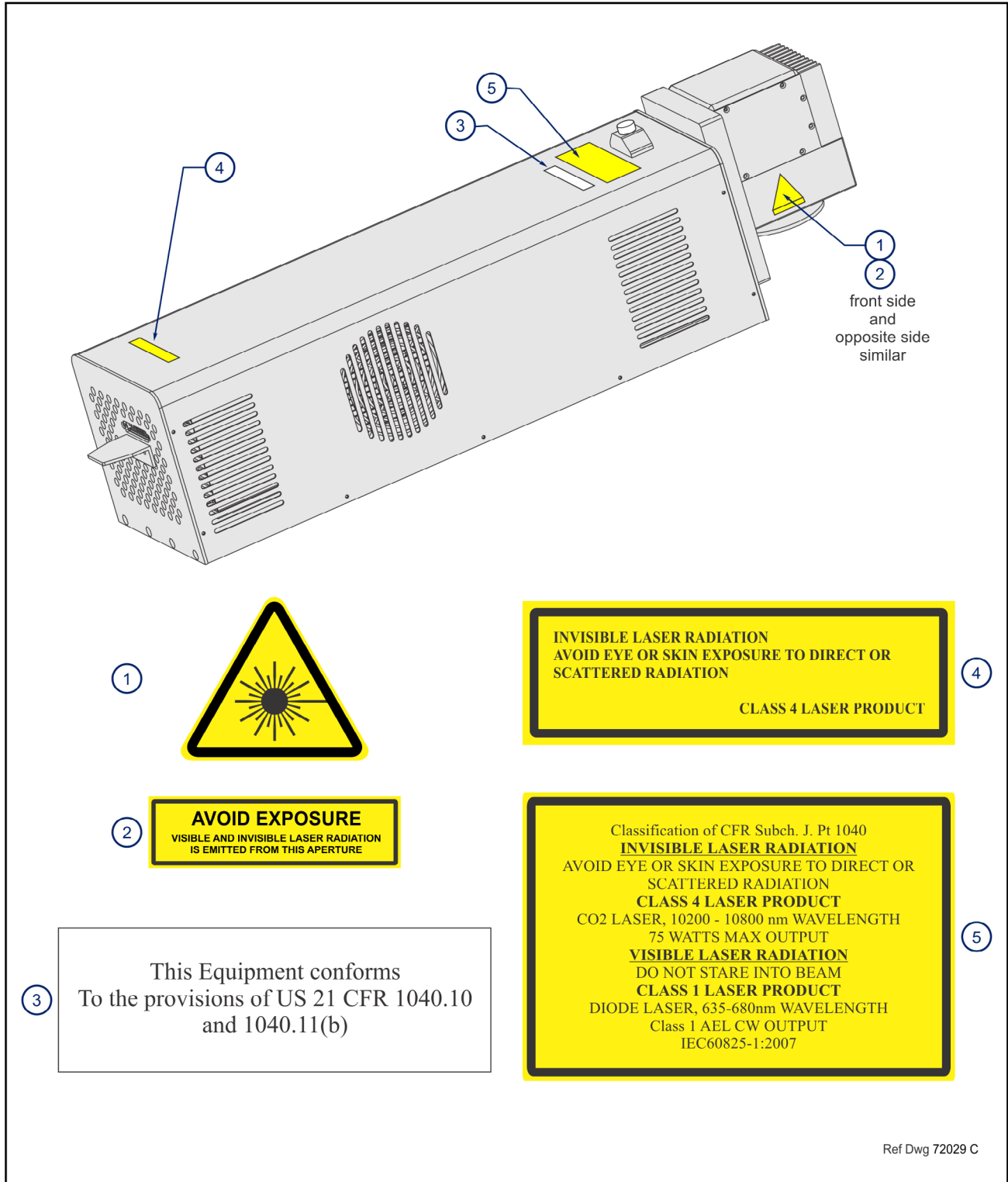


CO30AP Laser Marking Head Dimensions (Galvo Rotated 270°)

CO30AP Laser Marking System

CO30AP LASER MARKING HEAD SAFETY LABELS

The following illustration shows the labels and their locations on the CO30AP laser marking head. Please familiarize yourself with the laser labels and their locations prior to operating the laser marking system.



INVISIBLE LASER RADIATION
AVOID EYE OR SKIN EXPOSURE TO DIRECT OR
SCATTERED RADIATION

CLASS 4 LASER PRODUCT

AVOID EXPOSURE
VISIBLE AND INVISIBLE LASER RADIATION
IS EMITTED FROM THIS APERTURE

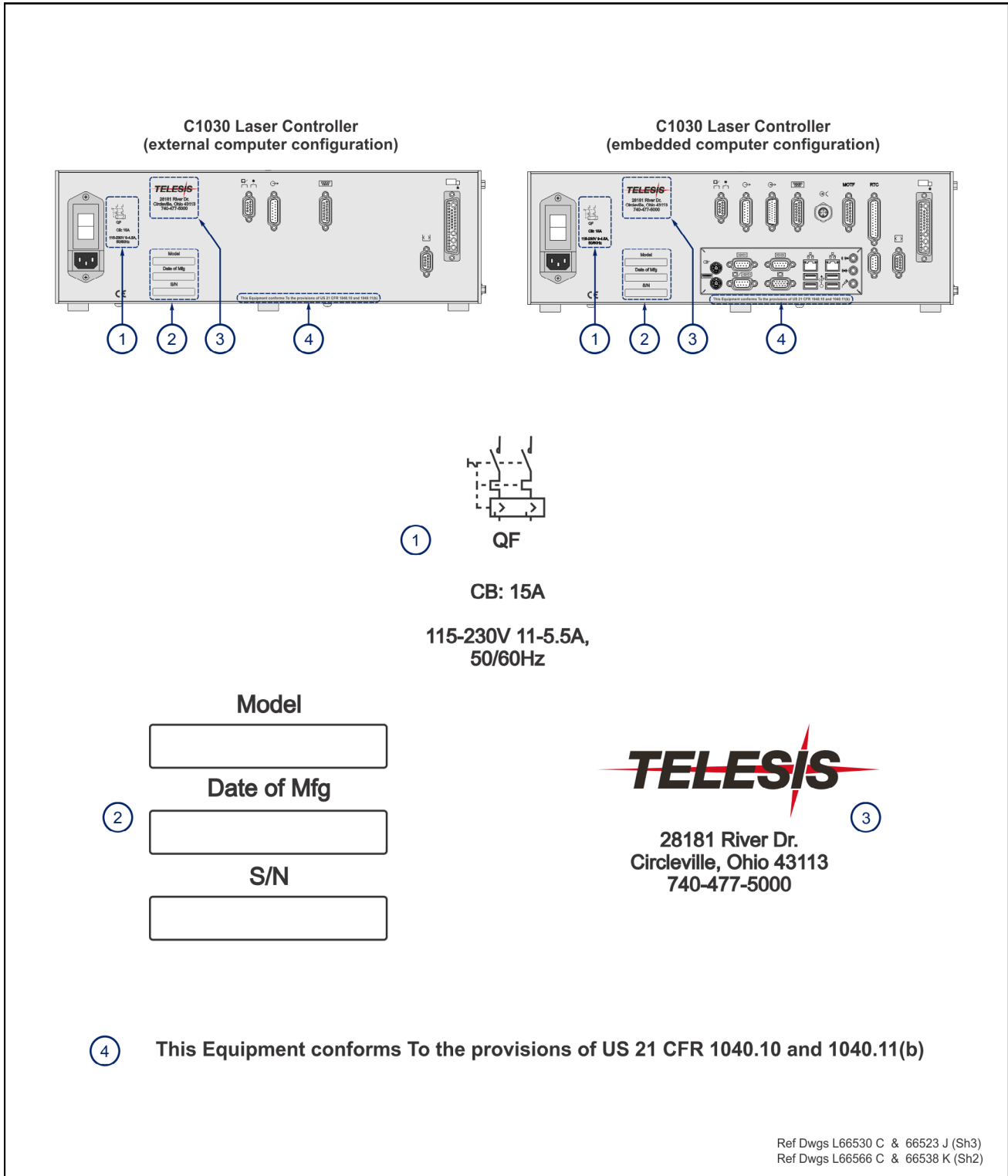
This Equipment conforms
To the provisions of US 21 CFR 1040.10
and 1040.11(b)

Classification of CFR Subch. J. Pt 1040
INVISIBLE LASER RADIATION
AVOID EYE OR SKIN EXPOSURE TO DIRECT OR
SCATTERED RADIATION
CLASS 4 LASER PRODUCT
CO2 LASER, 10200 - 10800 nm WAVELENGTH
75 WATTS MAX OUTPUT
VISIBLE LASER RADIATION
DO NOT STARE INTO BEAM
CLASS 1 LASER PRODUCT
DIODE LASER, 635-680nm WAVELENGTH
Class 1 AEL CW OUTPUT
IEC60825-1:2007

CO30AP Laser Marking System

C1030 LASER CONTROLLER SAFETY LABELS

The following illustration shows the labels and their locations on the C1030 laser controller. Please familiarize yourself with the laser labels and their locations prior to operating the laser marking system.



CO30AP LASER MARKING HEAD

The laser marking head incorporates the latest technology in sealed-tube, RF-excited, continuous wave, carbon dioxide lasers, providing excellent output power, stability, and reliability in a rugged compact modular package.

CO30AP Laser Marking Head Specifications

Dimensions (L x W x H).....	866.60 x 210.85 x 217.26 mm ¹ (34.118 x 8.301 x 8.554 in.)
	866.60 x 221.54 x 217.26 mm ² (34.118 x 8.722 x 8.554 in.)
	866.60 x 210.85 x 238.37 mm ³ (34.118 x 8.301 x 9.385 in.)
	866.60 x 223.55 x 217.26 mm ⁴ (34.118 x 8.801 x 8.554 in.)

Notes: 1) Galvo Head rotated 000°
 2) Galvo Head rotated 090°
 3) Galvo Head rotated 180°
 4) Galvo Head rotated 270°

Surrounding Envelope.....	see <i>CO30AP Laser Marking Head Dimensions</i> drawings
Electrical Power.....	680 watts (approximate)
Mounting Weight	approx. 26.3 Kg (58 lbs.)
Mounting.....	three factory-tapped M8-1.25 and three 0.2362 P6 holes (for M6 locating pins)
Positioning	visible red aiming diode (optional)
Field Resolution.....	16 bit (65535 data points)
Galvanometer	
Repeatability	< 22 micro radian
Marking Field Size	lens-dependent, see chart
Laser Marking Head Cable ...	1.8 m (6 ft.), detachable
Laser/Galvo Control Cable ...	3.6 m (12 ft.), detachable
Cooling.....	air cooled, fans

Dual-Sensor Shutter Circuit

The CO30AP laser marking head employs two separate sensors to detect the closed-state of the laser shutter mechanism. The sensor signals can be monitored at the Outputs Connector on the back panel of the laser controller. When the shutter is open, the sensor feedback signals are OFF. When the shutter is closed, the sensor feedback signals are ON.

Optional Visible Red Aiming Diode

Laser marking head may include a visible red diode that can be viewed on the work surface without the need for protective safety goggles.

The aiming diode provides a safe and convenient aid for laser setup and part programming. Since the red beam is located after the shutter, the aiming beam may be used with the shutter opened or closed. Additionally, the visible red beam may be used with the lasing beam during the marking cycle. **Note that protective eyewear must always be worn when the laser is in operation.**

Marking Field Size

The size of the marking field is dependent on type of lens installed on the laser marking head. See *Flat-Field Lens*.

Marking Depth

Simple laser parameters can be operator programmed to create depths ranging from simple surface discoloration, shallow laser etching, or deep laser engraving. Marking depth is dependent on several factors including material, lens type selected, and laser marking parameters. Please contact Telesis for the proper setting for your specific application.

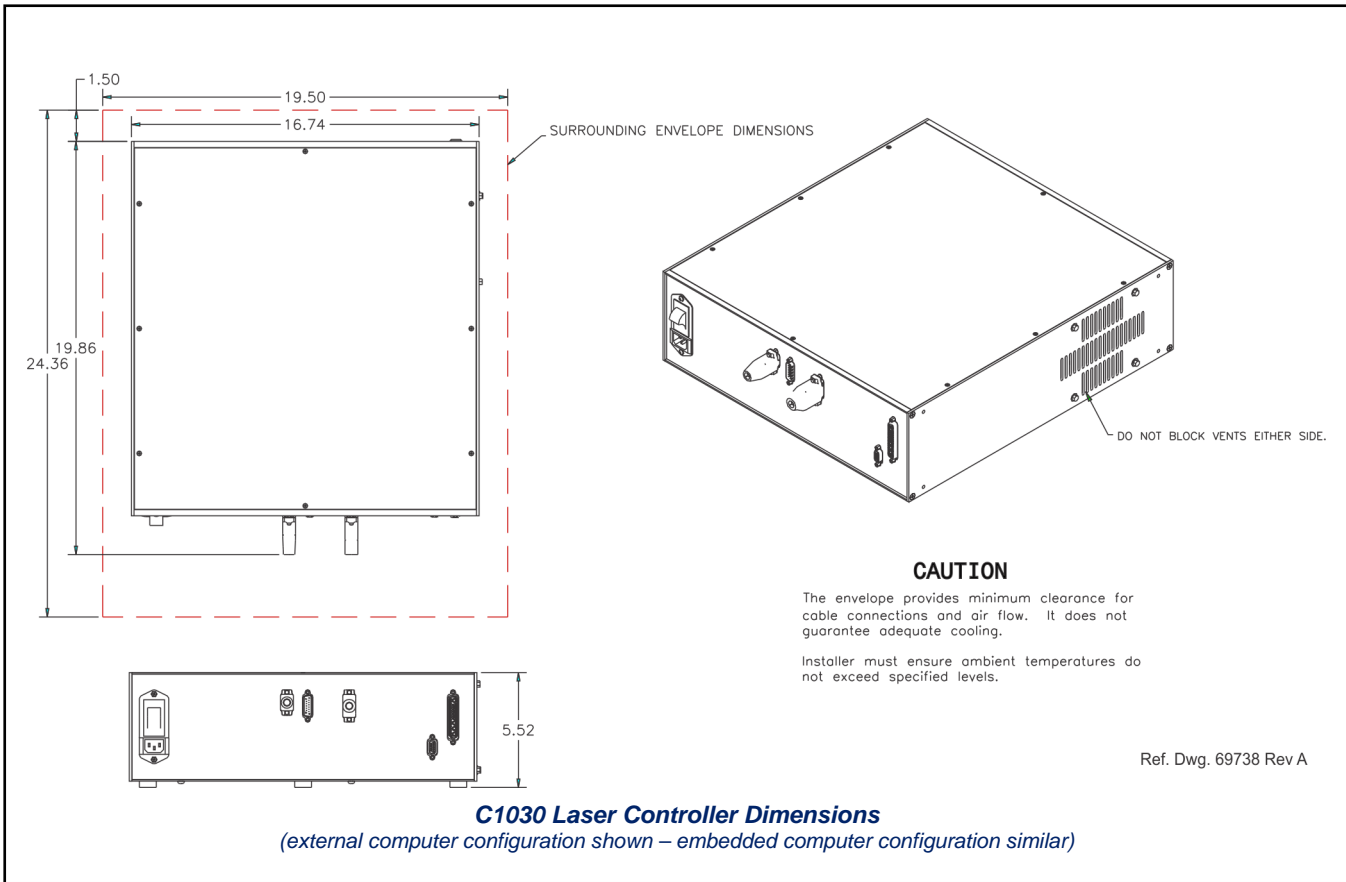
Flat-Field Lens

The flat-field lens is key to the marking performance of the system. This is the final coated optical lens that the beam will pass through before it strikes the marking target. This lens is called a flat field lens because when the beam is focused, the focus lies in a plane perpendicular to the optical axis of the lens.

The following chart outlines the available lenses, the resulting image field (marking window) provided by the lens, and the working clearance (in millimeters and inches) to properly focus the laser for marking.

Lens	Image Field Marking Window		Working Clearance	
	(mm)	(in.)	(mm)	(in.)
75 mm	50 x 50	1.97 x 1.97	54	2.13
100 mm	70 x 70	2.76 x 2.76	81	3.19
150 mm	100 x 100	3.94 x 3.94	131	5.16
200 mm	140 x 140	5.51 x 5.51	184	7.24
250 mm	170 x 170	6.69 x 6.69	233	9.17
300 mm	205 x 205	8.07 x 8.07	283	11.14
360 mm	250 x 250	9.84 x 9.84	351	13.82

CO30AP Laser Marking System



C1030 LASER CONTROLLER

The laser controller is remotely connected to the laser marking head by the laser marking head cable assembly. The cable assembly carries power and control signals to the laser marking head.

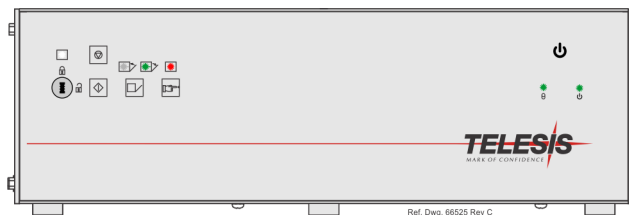
The laser controller provides the electrical control of the laser marking system. The controller connects to the facility electrical supply to provide power to the laser marking system. The laser controller is also the electrical interface between the laser marking software (installed on the system computer) and the laser marking head. It provides buttons and indicators to control and monitor the laser marking process.

C1030 Laser Controller Specifications

- Dimensions (W x H x D)..... 425.20 x 140.21 x 504.44 mm
(16.74 x 5.52 x 19.86 in.)
- Surrounding Envelope see *C1030 Laser Controller Dimensions* drawing
- Weight approx. 8.14 Kg (17.9 lbs.)
- Cooling air cooled, fan/filter

Operator (Front) Panel

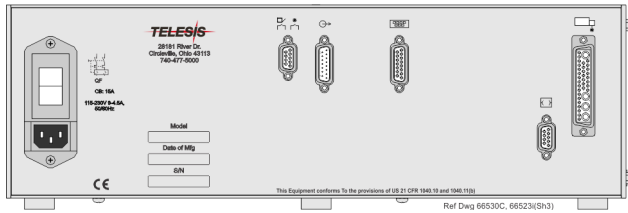
The laser control panel includes the system enable key switch, a soft power on/off button, green power indicator, laser start push button, laser off push button, safety shutter open and close controls, and a laser on (emission) indicator.



C1030 Laser Controller – Front Panel

Connector (Back) Panel for External Computer Usage

The rear panel of the controller provides a power entry module with circuit breaker and connectors for the laser marking head cable and the laser/galvo control cable. It also provides a remote interlock connector and a remote pendant connector. An output connector allows you monitor output signals reporting the status of the shutter, laser emission, and fault conditions.



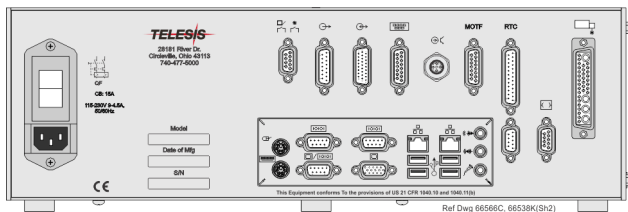
**C1030 Laser Controller
Back Panel – External Computer**

Connector (Back) Panel with Embedded Computer

The rear panel of the controller provides a power entry module with circuit breaker and connectors for the laser marking head cable and the laser/galvo control cable. It also provides a remote interlock connector and a remote pendant connector. An output connector allows you to monitor output signals reporting the status of the shutter, laser emission, and fault conditions.

An opto-isolated I/O connector and an I/O cable is provided for connection to the remote I/O devices. Refer to *Remote Communications* for more information.

Connections for the embedded system computer are mounted on a sub-panel. The separate panel allows you to connect a monitor, keyboard and mouse directly to the laser controller. Additional RS-232, Ethernet, and USB ports are provide for other optional connections and usage with Telesis software.



**C1030 Laser Controller
Back Panel – Embedded Computer**

SYSTEM COMPUTER

The laser system requires an IBM-compatible computer for running the Merlin II LS Laser Marking Software. The system computer may be an external device connected to the laser controller, or it may be embedded within the controller itself.

NOTICE

Merlin II LS software and associated applications are pre-installed on the embedded computer. The embedded system supports Telesis-installed software only and does not support user-installed programs.

All system computers supplied by Telesis (external and embedded) have the laser/galvo controller board and the Merlin II LS software installed prior to shipment so the entire assembly is tested as a laser marking system. Warranties for the computer, keyboard, monitor, and peripherals default to the original equipment manufacturer.

If the external system computer is supplied by anyone other than Telesis it must use the following software:

- Operating System Windows® 2000, XP, Vista® (Business), 7 (professional), or 8 (Professional)
- Operator Interface..... Telesis Merlin II LS Laser Marking Software

Additionally the system computer must, at a minimum, meet the following specifications:

- Processor Pentium® III with RAM as recommended per operating system
- Hard Drive 2 GB Hard Disk Drive
- External Drives CD-ROM Drive
- Comm Ports One available RS-232 Serial Port, Two available USB Ports, Two available Ethernet Ports, Two available full-height PCI Slots¹
- Circuit Cards Laser/Galvo Controller Board, Video Board
- Peripherals SVGA Color Monitor, Mouse², Keyboard²

¹) One additional PCI slot required if system is configured for mark-on-the-fly operation. If the system computer is a notebook, expansion must be used to provide the PCI slots.

²) Telesis recommends a USB mouse and a USB keyboard for system computers that are embedded in the laser controller.

CO30AP Laser Marking System

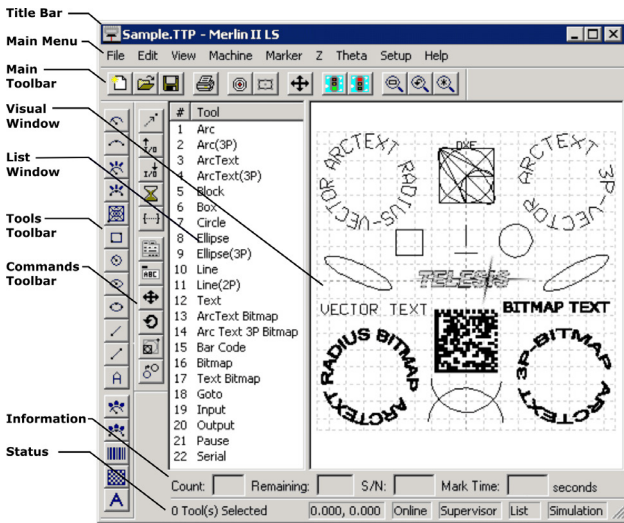
SYSTEM SOFTWARE

The powerful Telesis Merlin II LS Laser Marking Software is a Windows® based software package that comes standard with the laser marking system. It is a graphical user interface that makes marking pattern design quick and easy. The WYSIWYG (what-you-see-is-what-you-get) interface provides a to-scale image of the pattern as it is created. Just “click and drag” for immediate adjustment to field size, location, or orientation.

The Merlin II LS software includes tools to create and edit text at any angle, arc text, rectangles, circles, ellipses, and lines. Multiple fields may be grouped and saved as a block to form a logo. Existing DXF files can also be imported for marking. Non-printable fields can be created to clearly display a graphical representation of the part being marked.

Merlin II LS Laser Marking Software Specifications

Font Generation	True Type Fonts
Barcodes and Matrix	2D Data Matrix, PDF417, BC 39, Interleaved 2 of 5, UPCA/UPCE, BC 128, Maxi Code, Code 93, QR Code and others
Graphic Formats.....	Raster and Vector: BMP, GIF, JPG, WMF, EMF, DXF, CUR, ICO
Serialization	Automatic and Manual Input Host Interface Capable
Linear Marking	Scalable w/ Letter Spacing Control
Arc Text Marking.....	Scalable and Adjustable
Drawing Tools	Line, Rectangle, Circle, Ellipse



Merlin-II LS User Interface

Remote Communications

The communication capability of the laser marking software allows you to control the laser from a remote source. Remote communications can be performed by connecting to a Host computer, an optional two-axis Auxiliary Controller, or to remote I/O devices.

Host Communications. Remote communications may be executed from a host computer using RS-232 or Ethernet (TCP/IP) connections to the system computer running the Telesis laser marking software. The software provides parameters to define the data transmitted to and from the host. For more information on using and configuring these parameters, refer to the *Merlin II LS Operating Instructions*.

Two-axis Controller. Telesis offers an optional two-axis controller for all laser systems that use the Merlin II LS Laser Marking Software. The auxiliary controller provides an interface for connecting a Z-axis tool post and/or a Theta-axis rotary drive unit. An optional board allows connection of two additional linear axes. For installation details, refer to the *Auxiliary Controller Installation & Maintenance Manual* supplied with the two-axis controller.

I/O Kits for Systems with External Computers. Telesis offers optional I/O kits that provide up to 12 additional, programmable I/O signals (6 inputs and 6 outputs). All kits provide an I/O card, pre-installed SIPs resistor packs, and software driver CD. For details on connecting and using the additional I/O signals, refer to the *Installation Supplement* provided in each of the kits.

- **Kit 53920** ⁽¹⁾ provides a PCI-DIO24 card.
- **Kit 53928** ⁽²⁾ provides a PCI-DIO24 card, the Merlin I/O Interface Module, and two cable assemblies.
- **Kit 74445** ⁽¹⁾ provides a PCIe-DIO24 card (PCIe x1).
- **Kit 53928** ⁽²⁾ provides a PCIe-DIO24 card (PCIe x1), the Merlin I/O Interface Module, and two cable assemblies.

- 1) *This kit does not provide opto-isolated signals. Telesis does not endorse direct connection of I/O signals to the I/O board. Direct connections to high current/high voltage devices will damage the board.*
- 2) *When using the Merlin I/O Interface Module in this kit, additional I/O racks or opto-isolated board assemblies are not required.*

I/O Connector for Systems with Embedded Computers.

Controllers configured with an embedded computer provide an opto-isolated DB26P I/O connector. Separate I/O racks or opto-isolated board assemblies are not required. In addition to the standard input signals (Go, Abort, Input 1 through Input 4) and standard output signals (Done, Ready, Paused, Output 1 through Output 3), this connector provides two programmable inputs and two programmable outputs. For more information on connecting and using the opto-isolated I/O connector, refer to the *CO30AP Installation & Maintenance Manual*.

Communications Protocol

Two types of host interface are supported (RS-232 or TCP/IP) and two communication protocols are provided through the Merlin II LS laser marking software: Programmable and Extended.

Programmable Protocol. Programmable protocol provides one-way (receive only) communication with no error checking or acknowledgment of the transmitted data. You may use Programmable protocol to extract a continuous portion of a message string to print. This can be used with a host computer or a bar code scanner. Note that XON/XOFF Protocol applies even when Programmable Protocol is selected.

The Programmable Protocol Message Type identifies the type of message sent from the host. It determines how the marker uses the data it extracts from the host message string when Programmable Protocol is used.

- 49 Message type 49** (ASCII I) overwrites the content of the first text-based field in the pattern with the data extracted from the host message. Note that if the field contains message flags, they will be overwritten, not updated.
- 65 Message type 65** (ASCII A) updates the Offset Angle parameter with the data extracted from the host message. Syntax for the transmitted string is $\pm n$ where \pm is a positive or negative sign and n is an integer that represents the offset angle for the marking window.
- 72 Message type 72** (ASCII H) updates the Offset X/Y parameters with the data extracted from the host message. Syntax for the transmitted string is $\pm X.X, \pm Y.Y$ where \pm is a positive or negative sign, $X.X$ represents the X-axis offset distance, and $Y.Y$ represents the Y-axis offset distance.
- 80 Message type 80** (ASCII P) indicates the data extracted from the host message is the name of the pattern to be loaded.
- 81 Message type 81** (ASCII Q) updates the text in the first query text buffer (buffer 0) with the data extracted from the host message.
- 86 Message type 86** (ASCII uppercase V) updates the text in the first variable text field in the pattern with the data extracted from the host message.
- 118 Message type 118** (ASCII lowercase v) updates the first text field encountered in the pattern that contains a variable text flag that matches the specified string length.
- 0 Message type 0** (zero) indicates that host will provide message type, field number (if applicable), and data. This delegates message type selection to the host on message-by-message basis. The host message must use the format:

Tnn<string>

where:

T = the message type (I, A, H, P, Q, V, or v)

nn = the two-digit field number or query text buffer where data will be placed.

Note: Not used with Message Types A, H, P.

<string> = the pattern name to load (Message Type P).
or
the data to be inserted into the field or the query text buffer, as applicable (Message Types I, Q, V, or v).

CO30AP Laser Marking System

Communications Protocol (continued)

Extended Protocol. Extended protocol provides two-way communication with error checking and transmission acknowledgment. It is designed to provide secure communications with an intelligent host device using pre-defined message formats and response formats where serial communication is a vital part of the marking operation.

All communications are carried out in a parent/child relationship with the host being the parent. Only the host has the ability to initiate communications. The following describes the Extended Protocol message format as sent from the host to the Merlin II LS software.

SOH TYPE [##] STX [DATA] ETX BCC CR

where:

- SOH** ASCII Start of Header character (001H). The system ignores all characters received prior to the SOH.
- TYPE** A single, printable ASCII character that defines the meaning (type) and content of the message downloaded from the host, where:
- 1** **Message Type 1** provides data to a text string in the pattern or polls the pattern for data. See [DATA] for details.
 - A** **Message Type A** provides data to the system Offset Angle parameter for the marking window or polls the system for data. See [DATA] for details.
 - E** **Message Type E** allows the host to take the machine offline. It also provides the option of displaying an error message box with the provided data string. See [DATA] for details.
 - G** **Message Type G** initiates a print cycle.
 - H** **Message Type H** provides data to the system X/Y Offset parameters or polls the system for data. See [DATA] for details.
 - I** **Message Type I** polls the system for the I/O status.
 - O** **Message Type O** places the marker online. This allows a host computer to reset. For example, this may be used to recover from a power outage when the marker is unattended.
 - P** **Message Type P** loads a pattern or polls the system for the current pattern name. See [DATA] for details.
 - Q** **Message Type Q** provides data to the system query text buffer or polls the system for data. See [DATA] for details.
 - S** **Message Type S** polls the system for the machine status. The machine status is returned to the host in an eight-character hexadecimal mask.
 - V** **Message Type V** provides data to a variable text string in the pattern or polls the pattern for data. See [DATA] for details.
- [##]** Optional two-digit ASCII number that specifies the Station ID of the system in multi-drop network applications. The ID may range from 00-31. Note that "00" is reserved for applications where only one controller is used. In such applications, this field may be eliminated and "00" will be assumed.

STX ASCII Start of Text Character (002H).

[DATA] Character string that may be required for certain message types (e.g., Type 1, A, E, H, P, Q, or V).

Typically, data is sent in the format:

nn<string>

where:

nn = the two-digit field number or query text buffer where data will be placed. (Message Types 1, Q, or V).

<string> = the data to be inserted into the field or the query text buffer, as applicable (Message Types 1, Q, or V).

or

the pattern name to load (Message Type P).

or

the value of the X/Y Offset (Message Type H).

or

the value of the Offset Angle (Message Type A).

ETX ASCII end of text character (003H).

BCC Optional Block Check Code that is generated and sent to improve link reliability by providing fault detection. The BCC is calculated by taking an eight bit addition of the TYPE and DATA TEXT characters and transmitting them as a three digit ASCII decimal number in the range from 000 to 255. If the sum is greater than 255, the most significant bit overflows and is discarded.

CR ASCII Carriage Return Character (00DH).

TRADEMARKS

Telesis and **Merlin** are registered trademarks of Telesis Technologies, Inc. in the United States and/or other countries.

Pentium is a registered trademark of Intel Corporation in the United States and other countries.

Plexiglas is a registered trademark of Arkema, Inc.

Windows and **Vista** are registered trademarks of Microsoft Corporation in the United States and other countries.