

### System Overview

The Telesis<sup>®</sup> LY100 Nd:YAG laser is a high-powered, lamp-pumped, Q-switched, galvo-steered laser designed for marking applications. The LY100 delivers a 1064 nm laser beam which is excellent for deep engraving into metals and for high speed marking of plastics with a high carbon content.

The LY100 laser offers these advantages:

- Rugged industrial design with field-proven lamp-pumped technology
- 100W average power; greater than 200KW peak power
- Broadest beam width and greatest depth of focus allow easy setup and fast material processing
- Exceptional beam quality works with the broadest range of material applications
- Off-the-shelf consumable components available from several after market sources
- Three-point rugged INVAR<sup>™</sup> bar-based rail construction for precise optical alignment
- Ceramic pump chamber for performance and long life
- Umbilical can be detached from rear of controller for easy integration of laser rail assembly
- Long-life lamps; changes do not require cavity re-alignment

Simple and easy to maintain in a factory environment Nd:YAG laser is a high-powered, lamp-pumped, Q-switched, galvo-steered laser designed for marking applications.

### System Configuration

The LY100 is available in two configurations. One is capable of marking only stationary objects. The other is capable of marking objects while they are moving (i.e., mark-on-the-fly operation). The basic laser system consists of the following components.

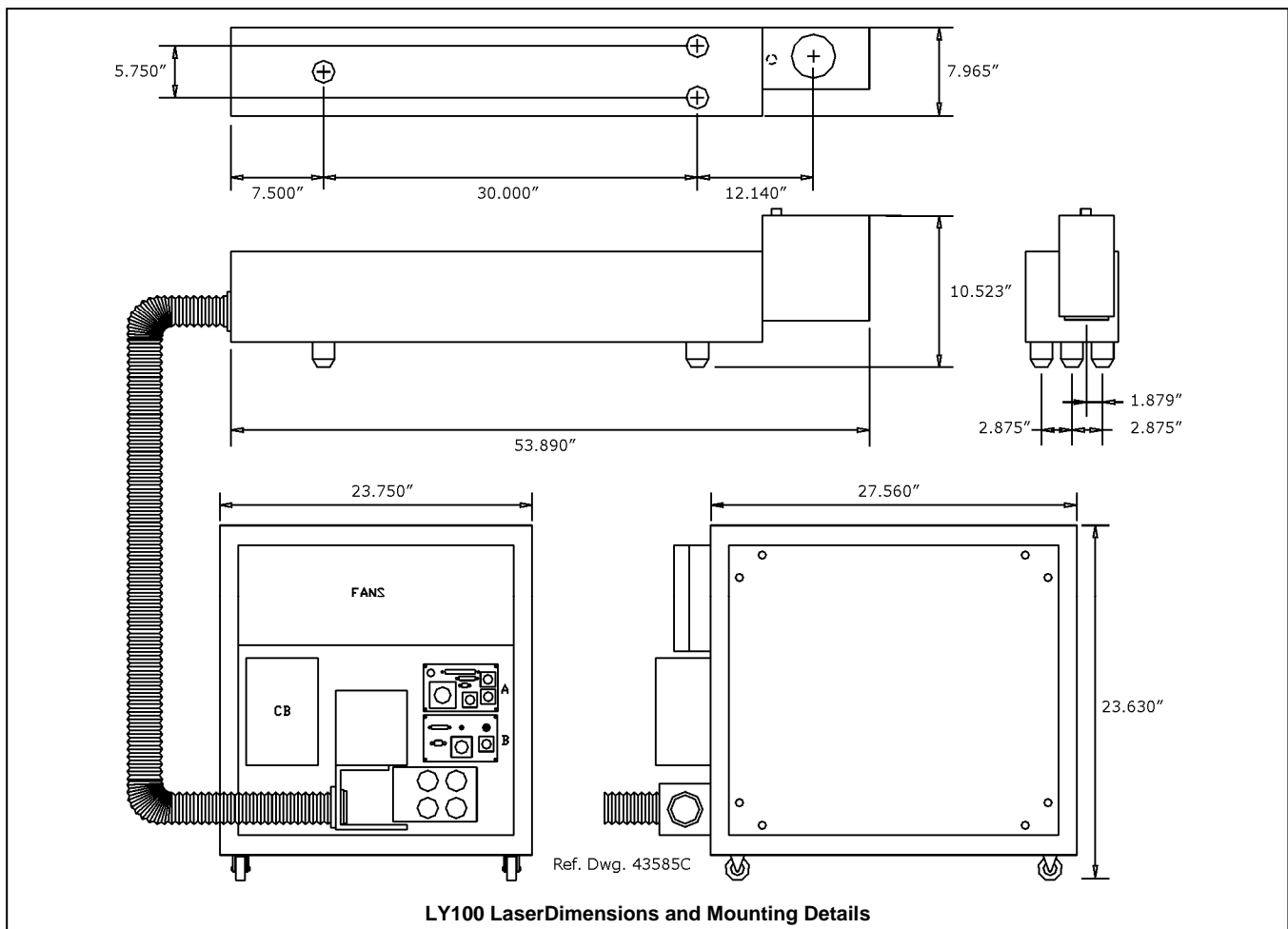
- **Laser Rail** (laser cavity and optics)
- **Galvanometer Assembly and Flat-field Lens**
- **Laser Controller and DI Water Cabinet**
- **Software** – Merlin<sup>®</sup>II LS Laser Marking Software
- **System Computer** – supplied by Telesis or by customer

The modular design allows for major components to be easily replaced and returned to Telesis if required.

### Laser System Options

- Desktop computer or Notebook computer with powered cardbus-to-PCI expansion enclosure
- Externally-mounted focus-finder diode
- Mark-on-the-fly kit to interface with customer-supplied encoder for marking objects in linear or circular motion
- Tool post w/ manual hand crank for z-axis adjustment
- Pushbutton station (start/abort)
- I/O Options:
  - TTL via PCI-DIO24 Card (Kit #53920)
  - Opto-isolated via Merlin DCIO Module (Kit #53928)
  - Two-axis Controller (for auxiliary axes; additional I/O)
- Programmable X-, Y, or Z-axis (requires two-axis controller)
- Rotary drive fixture (requires two-axis controller)
- Vacuum System
- Workstation / Work area enclosures
- Remote operation via optional pendant

# LY100 Laser Marking System



## System Setup

Complete installation procedures are provided in the *LY100 Installation/Maintenance Manual*. The following procedures are listed for reference only to provide a general overview of the installation process.

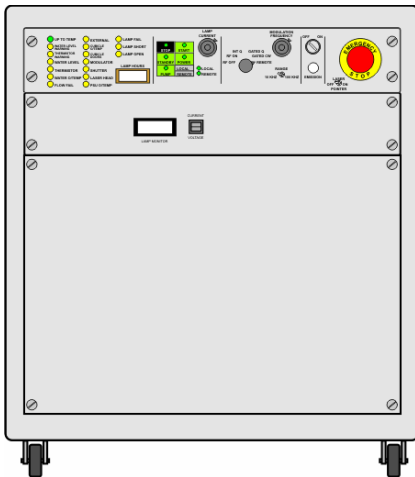
1. Equipment should remain powered down and in the OFF position until the mounting is complete.
2. Place the computer, monitor keyboard and laser controller/DI water cabinet in the desired location. Locate the laser controller as close as practical to the laser marking head. The standard cable length is 3 meters (9.8 feet).
3. If you choose to mount the laser into a workstation that has not been designed by Telesis, consider these factors:
  - ▶ Mount the laser rail in a horizontal plane. If you intend to mount the laser in any other orientation, please consult with Telesis Customer Service before proceeding.
  - ▶ Mount the laser such that the laser rail cover can be easily removed for routine lamp changes.
  - ▶ Ensure the installation location provides adequate clearance and ventilation. The umbilical cable requires a minimum bend radius of 178mm (7 in.) to avoid damage.
4. Place the laser rail assembly in the mounting position taking care not to bend or kink the umbilical.
5. Mount the laser rail assembly by using three M6-1.0 bolts. **Mounting bolts must not extend into the galvo block as to interfere with the internal components. Torque to 80 in-lb (9.045 N-m).**
  - a. Mounting holes are tapped for metric threads. Refer to the Dimensions and Mounting Details drawing for mounting bolt locations. Standard clearance holes (0.26 in.) for M6-1.00 bolts should be used.
  - b. The leading edge of the mounting plate should be no greater than .875 in. (22.23 mm) from the first set of holes to allow clearance for the beam output lens.
  - c. As viewed from front of laser in upright position, the center of the output beam is 12.14 in. (308.36mm) forward of the first set of mounting holes and is 1.879 in. (47.727mm) from the right mounting hole.
  - d. A minimum distance of 14 in. (356mm) should be allowed from the rear of the laser to allow for proper installation of the umbilical.
6. Ensure the Laser Controller power switch is OFF.
7. Connect the remaining cables.
8. Refer to the *LY100 Operation Supplement* for proper startup procedure of the complete system.
9. Refer to the laser marking system *Operation Manual* for complete information on using the system software.



## Laser Controller/DI Water Cabinet

Designed to meet CDRH, CE standards, the Laser Controller/DI Water Cabinet contains the galvo power supplies, computer interface card, driver control circuits, fusing, and the closed-loop de-ionized water cooling system. The small profile cabinet is designed to slide into a workstation opening or placed directly under a workbench.

The Laser Controller/DI Water Cabinet is remotely connected to the rail enclosure by a 3-meter (10-foot) umbilical. The umbilical is a combined multi-cable and hose assembly that carries power to the lamp, control voltages to the laser, and cooling, de-ionized water to the rail assembly.



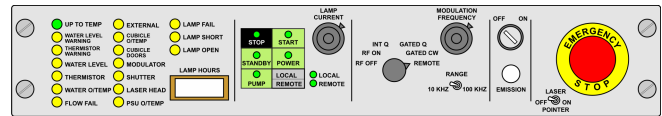
LY100 Laser Controller/DI Water Cabinet

**DI Water Cabinet.** The internal de-ionized water system is a closed loop water to water heat exchanger system that transfers cooling water by way of an electric water pump from the DI Water Cabinet to the laser rail enclosure. Inside the laser rail the water is flows through the laser cavity cooling the laser rod and arc lamp assembly and through the modular AOM (Q-switch) to provide cooling to that optical device during lasing. The de-ionized cooling water is then returned through the umbilical to the DI Water Cabinet holding tank. The tank contains temperature sensors, di-restivity sensors, a de-ionizer filter cartridge, and particle filter water level sensors.

It is important to note that the laser system should be shipped or stored “dry” with no water in the laser cavity or umbilical. This is to prevent water spots from forming on the reflective surfaces of the laser cavity and to ensure that water will not freeze in the lines or on the optics during cold weather. It is also important to note that the pump size on the DI Water Cabinet is designed with enough pressure to pump only to and from the laser rail enclosure.

**Laser Controller.** The Laser Controller provides the energy to drive the krypton arc lamp (in the laser cavity of the laser rail enclosure) and to control the lasing process.

The Laser Control Panel includes the system key switch, Laser Power Off, a manual safety shutter control, function indicators, and digital displays.



LY100 Laser Control Panel

## Laser Controller/DI Water Cabinet Specifications

Dimensions.....23.75 x 23.63 x 31.75 in.  
(W x H x D) .....(603.3 x 600.2 x 806.5mm)

Surrounding Envelope .....32 x 32 x 40 in.  
(813 x 813 x 1016mm)  
[for air circulation]

Internal Heat Exchanger .....De-ionized (DI) Water,  
approximately 3.7 gallons  
(14 liters), distilled

External Cooling Water .....Facility water or dedicated water  
chiller (e.g., AEC PS2A)  
5 gallons/min. (19 liters/min.);  
50 to 65°F (10 to 18°C)

## System PC

The laser system requires an IBM-compatible computer for running the Merlin II LS Laser Marking Software. The PC may be a desktop or a notebook computer and may be supplied by Telesis or by the customer. If the PC is supplied by Telesis, warranty for the computer, computer keyboard, monitor, and peripherals default to the original equipment manufacturer.

Galvo control cards are included, along with interconnect cabling. The laser software is installed and the entire unit is tested as a laser marking system.

The minimum computer requirements are as follows:

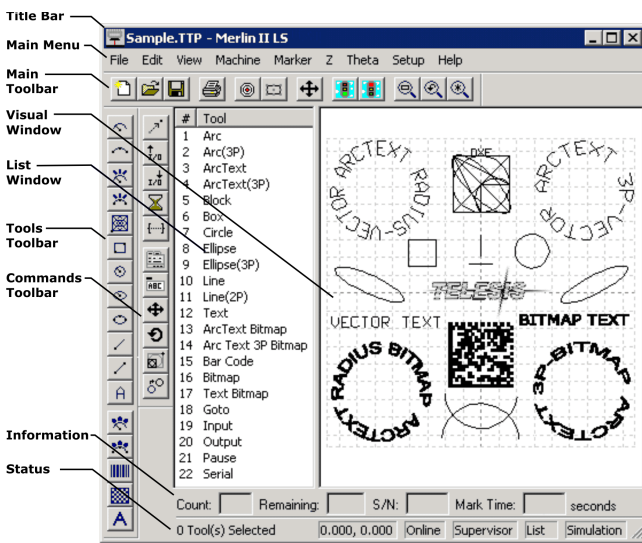
- Windows® 2000, Windows® XP, or Windows® Vista™ Business
- Telesis Merlin II LS Laser Marking Software
- Pentium® III with recommended RAM as per operating system
- Multi-gigabyte, HDD
- CD-ROM and 3.5 in. External Disk Drives
- SVGA Color Monitor, Mouse, and Keyboard
- Laser/Galvo Controller Board (configured for stationary marking or marking “on-the-fly”)
- Video Card
- One available RS-232 Serial Port
- Two available USB Ports
- Two (minimum) full-height PCI Slots \*

**Note:** If a notebook computer is used, expansion must be used to provide the PCI slots.

## System Software

The powerful Telesis Merlin II LS Laser Marking Software is a Windows® based operating software package that comes standard with the laser marking system. It is a graphical user interface that makes marking pattern design quick and easy. The WYSIWYG (what-you-see-is-what-you-get) interface provides a to-scale image of the pattern as it is created. Just “click and drag” for immediate adjustment to field size, location, or orientation.

The Merlin II LS includes tools to create and edit text (at any angle), arc text, rectangles, circles, ellipses, and lines. Multiple fields may be grouped and saved as a block to form a logo. Existing DXF files can also be imported for marking. Non-printable fields can be created to clearly display a graphical representation of the part being marked.



Overview of Merlin II LS User Interface

## Merlin II LS Laser Marking Software Specifications

Operating System .....	Windows® 2000, Windows® XP, or Windows® Vista™ Business using a Desktop PC or Notebook PC
Font Generation .....	True Type Fonts
Barcodes and Matrix .....	2D Data Matrix, PDF417, BC 39, Interleaved 2 of 5, UPCA/UPCE BC 128, Maxi Code, Code 93, QR Code and others
Graphic Formats .....	Raster and Vector: BMP, GIF, JPG, WMF, EMF, DXF, CUR, ICO
Serialization .....	Automatic and Manual Input Host Interface Capable
Linear Marking .....	Scalable with Letter Spacing Control
Arc Text Marking .....	Scalable and Adjustable
Drawing Tools .....	Line, Rectangle, Circle, Ellipse

## Remote Communications

The communication capability of the marking system software allows you to control the laser from remote I/O devices. Remote communications can be performed by connecting to a Host computer, an optional I/O card, or an optional two-axis Auxiliary Controller. The rear panel of the controller also provides a connector to monitor output signals that report the status of the shutter, laser emission, and fault conditions.

**Host Communications.** Remote communications may be executed from a host computer using RS-232 or Ethernet (TCP/IP) connections to the system computer (i.e., the PC running the Telesis laser marking software). The software provides parameters to define the data transmitted to and from the host. For more information on using and configuring these parameters, refer to the *Operation Manual* supplied with the laser marking software.

**I/O Card.** Telesis offers an optional I/O card that provides six input signals (Start Print, Abort, and four programmable inputs) and six output signals (Ready, Done, Paused, and three programmable outputs). The I/O card is available in the following kits. For more information on using the optional I/O card, refer to the Telesis *Optional I/O Card Installation Supplement* supplied in each of these kits.

**Kit #53920** This kit is available for all Telesis laser systems. It includes the I/O Card, SIPs resistor packs (pre-installed), the software driver CD, and installation documentation. This kit does not provide opto-isolated signals. If this kit is used, it is the responsibility of the installer/integrator to provide opto-isolation between remote I/O devices and the I/O card. Refer to the OEM *User's Guide* for signal limitations.

**Note:** Telesis does not endorse direct connection of I/O signals to the I/O card. Direct connections to high current/high voltage devices will damage the card.

**Kit #53928** This kit is available for all laser systems that use the Merlin II LS Laser Marking Software. It includes Kit #53920 (above), plus the Telesis I/O Interface Module and two cable assemblies. This kit provides opto-isolated signals between remote I/O devices and the I/O card through the Telesis I/O Interface Module. Additional opto-isolator board assemblies or opto-isolated I/O rack assemblies are not required when the interface module is used.

**Two-axis Controller.** Telesis offers an optional two-axis controller for all laser systems that use the Merlin-II LS Laser Marking Software. The auxiliary controller provides an interface for connecting six input and six output signals to and from the laser marking system, and for connecting the optional auxiliary axes: vertical (Z) axis, rotational (Theta) axis, and linear (L1 and L2) axes.

Environmental considerations must be taken into account when installing the auxiliary controller concerning contaminants and EMI susceptibility. For details, refer to the *Installation/Maintenance Manual* supplied with the controller.

## Communications Protocol

Two types of host interface are supported (RS-232 or TCP/IP) and two communication protocols are provided through the Merlin II LS marking system software (Programmable and Extended).

**Programmable Protocol.** Programmable protocol provides one-way (receive only) communication with no error checking or acknowledgment of the transmitted data. You may use Programmable protocol to extract a continuous portion of a message string to print. This can be used with a host computer or a bar code scanner. Note that XON/XOFF Protocol applies even when Programmable Protocol is selected.

The Programmable Protocol Message Type identifies the type of message sent from the host. It determines how the marker uses the data it extracts from the host message string when Programmable Protocol is used.

- **49** Message type 49 ("I") overwrites the content of the first text-based field in the pattern with the data extracted from the host message. Note that if the field contains message flags, they will be overwritten, not updated.
- **65** Message type 65 ("A") updates the Offset Angle parameter with the data extracted from the host message. Syntax for the transmitted string is  $\pm n$  where  $\pm$  is a positive or negative sign and  $n$  is an integer that represents the offset angle for the marking window.
- **72** Message type 72 ("H") updates the Offset X/Y parameters with the data extracted from the host message. Syntax for the transmitted string is  $\pm X.X, \pm Y.Y$  where  $\pm$  is a positive or negative sign,  $X.X$  represents the X-axis offset distance, and  $Y.Y$  represents the Y-axis offset distance.
- **80** Message type 80 ("P") indicates the data extracted from the host message is the name of the pattern to be loaded.
- **81** Message type 81 ("Q") updates the text in the first query text buffer (buffer 0) with the data extracted from the host message.
- **86** Message type 86 ("V") updates the text in the first variable text field in the pattern with the data extracted from the host message.
- **118** Message type 118 ("v") updates the first text field encountered in the pattern that contains a variable text flag that matches the specified string length.

If the host is providing the Message Type within the transmitted text string, enter "0" in the Message Type parameter text box displayed on the Programmable tab of the Host/Setup window.

- **0** Message type 0 (zero) indicates that the host will provide the message type, field number (if applicable), and data (if applicable). This option allows more flexibility by delegating the message type selection to the host on a message-by-message basis. It also allows you to direct data to specific fields and/or query text buffers.

The host can use Message Type 0 to provide data to the marking system. The marking system will insert data transmitted with the message into the appropriate location.

## Communications Protocol (continued)

**Extended Protocol.** Extended protocol provides two-way communication with error checking. It is designed to provide secure communications with an intelligent host device using pre-defined message formats and response formats. It also provides error checking using a block check code to detect faults in the transmitted messages and to verify the data is properly received.

The Extended Protocol Message Type determines how the marker uses the data it extracts from the host message string or from the marking system software, as applicable.

- I** Message Type "I" can provide data to a text string in the pattern or poll the pattern for data.
- A** Message Type "A" can provide data to the system Offset Angle parameter for the marking window or poll the system for data.
- E** Message Type "E" allows the host to take the machine offline. It also provides the option of displaying an error message box with the provided data string.
- V** Message Type "V" can provide data to a variable text string in the pattern or poll the pattern for data.
- P** Message Type "P" can load a pattern or poll the system for the current pattern name.
- O** Message Type "O" places the marker online. This allows a host computer to reset. For example, this may be used to recover from a power outage when the marker is unattended.
- G** Message Type "G" initiates a print cycle.
- Q** Message Type "Q" can provide data to the system query text buffer or poll the system for data.
- H** Message Type "H" can provide data to the system X/Y Offset parameters or poll the system for data.
- S** Message Type "S" is used to poll the system for the machine status. The machine status is returned to the host in an eight-character hexadecimal mask.
- I** Message Type "I" is used to poll the system for the I/O status.

## TRADEMARKS

**Telesis** and **Merlin** are registered trademarks of Telesis Technologies, Inc. in the United States and/or other countries.

**Invar** is a trademark of ArcelorMittal Stainless & Nickel Alloys (Imphy Alloys).

**Pentium** is a registered trademark of Intel Corporation in the United States and other countries.

**Vista** is a trademark of Microsoft Corporation in the United States and other countries.

**Windows** is a registered trademark of Microsoft Corporation in the United States and other countries.